

Synchronous Lifting

Standard 8 Point Lift System

The solution for up to 8 lifting points with load control

Shown: 8-point ESS Standard Synchronous Lift System



Features

- Control up to 8 lifting points
- Stroke and load controlled movement for positioning and weighing
- Accuracy of 0.040" between leading and lagging cylinders
- Data storage and recording capabilities
- Load and stroke alarms for optimal safety
- For use with standard single or double-acting cylinders
- Integrated 10,000 psi hydraulic pump and controls

Typical Synchronous Lifting Applications

- Bridge lifting and repositioning
- Bridge launching
- Lifting and lowering of heavy equipment
- Leveling of existing structures and buildings
- Structural Testing
- Lifting and weighing of oil platforms
- Tunnel Jacking and pushing



ENERPAC 
Hydraulic Technology Worldwide

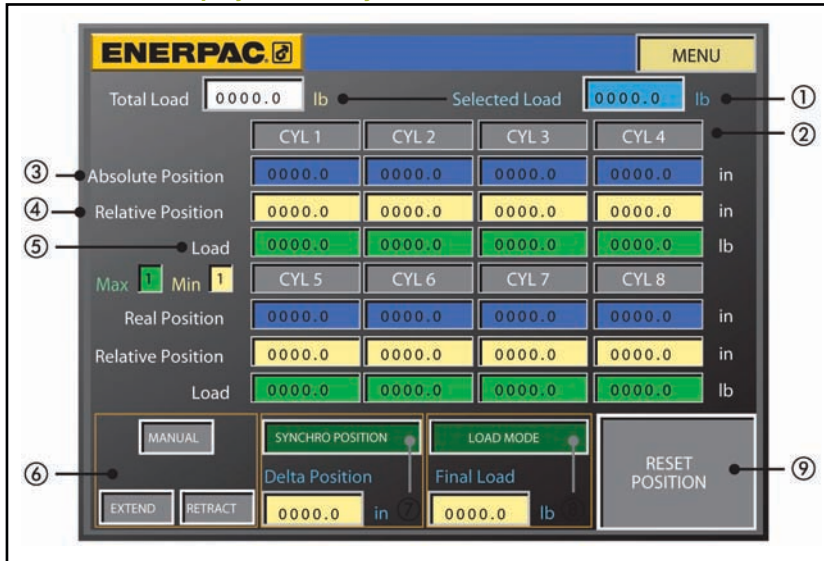


Synchronous Lifting

Standard 8 Point Lift System

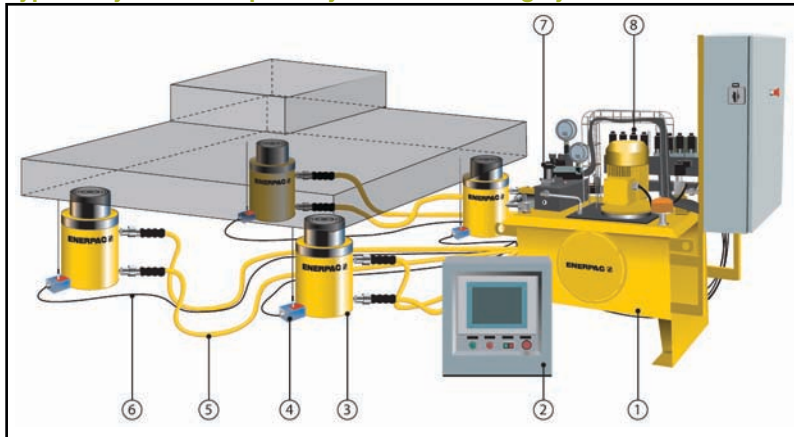
The solution for up to 8 lifting points with load control

Touch screen display for ESS Synchronous Lift Controller



- 1) Load Readings
- 2) Cylinder On/Off
- 3) Absolute Sensor Position
- 4) Relative Sensor Position
- 5) Individual Load Readings
- 6) Manual Controls
- 7) Stroke Controls
- 8) Load Controls
- 9) Relative Position Reset

Typical layout for a 4-point synchronous lifting system



- 1) Hydraulic Pump
- 2) PLC - Control with Touch Screen
- 3) Hydraulic Cylinders
- 4) Stroke Sensors
- 5) Hydraulic Hoses
- 6) Sensor Cables
- 7) Solenoid Control Valves
- 8) Pressure Transducer



ENERPAC
Hydraulic Technology Worldwide