

# Shackles

.33 - 55 Ton Green Pin® bow shackle with screw collar pin



**Material:** bow and pin high tensile steel, Grade 6, quenched and tempered

**Safety Factor:** MBL equals 6 x WLL

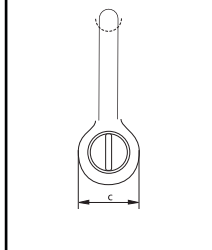
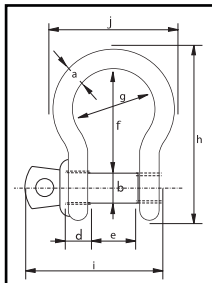
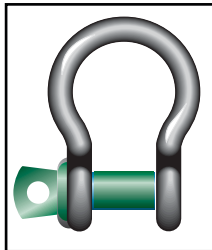
**Standard:** En 13889 and meets performance requirements of US Fed. Spec. RR-C-271 Type IVA Class 2, Grade A

**Finish:** hot dipped galvanized

**Temperature Range:** -20°C up to +200° C

**Certificates:** at no extra charges this product can be supplied with a works certificate, certificate of basic raw material, manufacturer test certificate and/or EC Declaration of Conformity.

G-4161



Specifications (mm)											
Working load limit	Diameter bow	Diameter pin	Diameter eye	Width eye	Width inside	Length inside	Width bow	Length	Length bolt	Width bow	Weight each
tons	a mm	b mm	c mm	d mm	e mm	f mm	g mm	h mm	i mm	j mm	kg
0.33	5	6	12.5	5	9.5	22	16	41	31	28	0.02
0.5	7	8	17	7	12	29	20	54	40	37	0.05
0.75	9	10	21	9	13.5	32	22	61	49	42	0.1
1	10	11	23	10	17	36.5	26	71	56	49	0.14
1.5	11	13	26	11	19	43	29	80	68	54	0.19
2	13.5	16	34	13.5	22	51	32	91	76	63	0.36
3.25	16	19	40	16	27	64	43	114	93	79	0.63
4.75	19	22	47	19	31	76	51	136	107	94	1.01
6.5	22	25	53	22	36	83	58	157	123	107	1.5
8.5	25	28	60	25	43	95	68	176	141	124	2.21
9.5	28	32	67	28	47	108	75	197	158	137	3.16
12	32	35	74	32	51	115	83	218	176	154	4.31
13.5	35	38	80	35	57	133	92	240	192	170	5.55
17	38	42	89	38	60	146	99	262	208	183	7.43
25	45	50	104	45	74	178	126	314	250	226	12.84
35	50	57	119	50	83	197	138	358	281	250	18.15
42.5	57	65	134	57	95	222	160	414	321	287	26.29
55	65	70	145	65	105	260	185	463	355	329	37.6

Green shading reflects rental inventory.

Specifications (in)											
Working load limit	Diameter bow	Diameter pin	Diameter eye	Width eye	Width inside	Length inside	Width bow	Length	Length bolt	Width bow	Weight each
tons	a in	b in	c in	d in	e in	f in	g in	h in	i in	j in	lbs
0.33	3/16	1/4	1/2	3/16	3/8	7/8	5/8	1 5/8	1 1/4	1 1/8	0.05
0.5	1/4	5/16	11/16	9/32	1/2	1 5/8	25/32	2 1/8	1 9/16	1 1/2	0.11
0.75	5/16	3/8	13/16	11/32	17/32	1 9/32	7/8	2 3/8	1 15/16	1 11/16	0.22
1	3/8	7/16	29/32	3/8	11/16	1 7/16	1	2 25/32	2 3/16	1 15/16	0.3
1.5	7/16	1/2	1 1/32	7/16	3/4	1 23/32	1 5/32	3 5/32	2 11/16	2 1/8	0.42
2	1/2	5/8	1 11/32	17/32	7/8	2	1 9/32	3 19/32	3	2 1/2	0.79
3.25	5/8	3/4	1 19/32	5/8	1 3/32	2 17/32	1 23/32	4 1/2	3 11/16	3 1/8	1.38
4.75	3/4	7/8	1 7/8	3/4	1 1/4	3	2	5 11/32	4 3/16	3 23/32	2.22
6.5	7/8	1	2 3/32	7/8	1 7/16	3 9/32	2 9/32	6 5/32	4 13/16	4 3/16	3.31
8.5	1	1 1/8	2 11/32	1	1 23/32	3 3/4	2 11/16	6 29/32	5 9/16	4 7/8	4.86
9.5	1 1/8	1 1/4	2 5/8	1 1/8	1 7/8	4 1/4	2 15/16	7 3/4	6 3/16	5 3/8	6.97
12	1 1/4	1 3/8	2 29/32	1 9/32	2	4 17/32	3 9/32	8 9/16	6 29/32	6 1/32	9.49
13.5	1 3/8	1 1/2	3 5/32	1 3/8	2 1/4	5 1/4	3 5/8	9 7/16	7 9/16	6 11/16	12.24
17	1 1/2	1 5/8	3 1/2	1 17/32	2 11/32	5 3/4	3 29/32	10 5/16	8 3/16	7 3/16	16.37
25	1 3/4	2	4 1/8	1 25/32	2 29/32	7	4 15/16	12 11/32	9 13/16	8 29/32	28.31
35	2	2 1/4	4 11/16	1 31/32	3 9/32	7 3/4	5 7/16	14 3/32	11 3/32	9 13/16	40.01
42.5	2 1/4	2 9/16	5 9/32	2 1/4	3 3/4	8 3/4	6 9/32	16 5/16	12 5/8	11 5/16	57.96
55	2 1/2	2 3/4	5 3/4	2 9/16	4 1/8	10 1/4	7 9/32	18 1/4	14	12 15/16	82.89

Green shading reflects rental inventory.

Sales@lgh-usa.com | Rigging



**NOTE:** Want to purchase this item instead?  
LGH is an authorized VanBeest Distributor



# Shackles

.5 - 85 Ton Green Pin® bow shackles with safety bolt

**Material:** bow and pin high tensile steel, Grade 6, quenched and tempered

**Safety Factor:** MBL equals 6 x WLL

**Standard:** En 13889 and meets performance requirements of US Fed. Spec. RR-C-271 Type IVA Class 3, Grade A

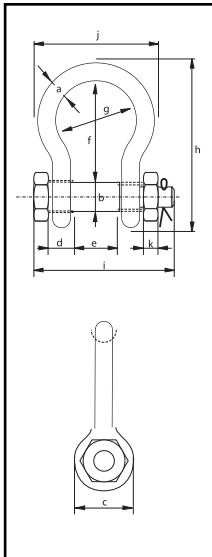
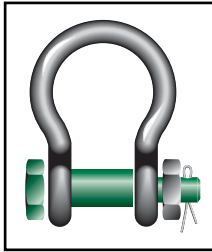
**Finish:** hot dipped galvanized

**Temperature Range:** -20°C up to +200° C

**Certificates:** at no extra charges this product can be supplied with a works certificate, certificate of basic raw material, manufacturer test certificate and/or EC Declaration of Conformity



G-4163



Specifications (mm)												
Working load limit	Diameter bow	Diameter pin	Diameter eye	Width eye	Width inside	Length inside	Width bow	Length	Length bolt	Width bow	Thickness nut	Weight each
tons	a mm	b mm	c mm	d mm	e mm	f mm	g mm	h mm	i mm	j mm	k mm	lbs
0.5	7	8	17	7	12	29	20	54	43	37	4	0.13
0.75	9	10	21	9	13.5	32	22	61	51	42	5	0.25
1	10	11	23	10	17	36.5	26	71	61	49	8	0.34
1.5	11	13	26	11	19	43	29	80	68	54	11	0.48
2	13.5	16	34	13.5	22	51	32	91	83	63	13	0.92
3.25	16	19	40	16	27	64	43	114	99	79	17	1.62
4.75	19	22	47	19	31	76	51	136	115	94	20	2.59
6.5	22	25	53	22	36	83	58	157	131	107	23	3.9
8.5	25	28	60	25	43	95	68	176	151	124	25	5.69
9.5	28	32	67	28	47	108	75	197	167	137	28	8.06
12	32	35	74	32	51	115	83	218	179	154	31	10.81
13.5	35	38	80	35	57	133	92	240	198	170	34	14.42
17	38	42	89	38	60	146	99	262	203	183	39	18.06
25	45	50	104	45	74	178	126	314	244	226	45	31.34
35	50	57	119	50	83	197	138	358	270	250	51	43.77
42.5	57	65	134	57	95	222	160	414	302	287	60	62.46
55	65	70	145	65	105	260	180	463	330	329	76	87.27
85	75	83	163	75	127	329	190	556	376	355	101	136.69

Green shading reflects rental inventory.

Specifications (in)												
Working load limit	Diameter bow	Diameter pin	Diameter eye	Width eye	Width inside	Length inside	Width bow	Length	Length bolt	Width bow	Thickness nut	Weight each
tons	a in	b in	c in	d in	e in	f in	g in	h in	i in	j in	k in	lbs
0.5	1/4	5/16	11/16	9/32	1/2	1 5/32	25/32	2 1/8	1 23/32	1 1/2	5/32	0.13
0.75	5/16	3/8	13/16	11/32	17/32	1 9/32	7/8	2 3/8	2	1 11/16	3/16	0.25
1	3/8	7/16	29/32	3/8	11/16	1 7/16	1	2 25/32	2 3/8	1 15/16	5/16	0.34
1.5	7/16	1/2	1 1/32	7/16	3/4	1 23/32	1 5/32	3 5/32	2 11/16	2 1/8	7/16	0.48
2	1/2	5/8	1 11/32	17/32	7/8	2	1 9/32	3 19/32	3 9/32	2 1/2	17/32	0.92
3.25	5/8	3/4	1 19/32	5/8	1 3/32	2 17/32	1 23/32	4 1/2	3 29/32	3 1/8	11/16	1.62
4.75	3/4	7/8	1 7/8	3/4	1 1/4	3	2	5 11/32	4 17/32	3 23/32	25/32	2.59
6.5	7/8	1	2 3/32	7/8	1 7/16	3 9/32	2 9/32	6 5/32	5 5/32	4 3/16	29/32	3.9
8.5	1	1 1/8	2 11/32	1	1 23/32	3 3/4	2 11/16	6 29/32	5 15/16	4 7/8	1	5.69
9.5	1 1/8	1 1/4	2 5/8	1 1/8	1 7/8	4 1/4	2 15/16	7 3/4	6 19/32	5 3/8	1 1/8	8.06
12	1 1/4	1 3/8	2 29/32	1 9/32	2	4 17/32	3 9/32	8 9/16	7 1/32	6 3/32	1 1/4	10.81
13.5	1 3/8	1 1/2	3 5/32	1 3/8	2 1/4	5 1/4	3 5/8	9 7/16	7 25/32	6 23/32	1 11/32	14.42
17	1 1/2	1 3/4	3 1/2	1 17/32	2 11/32	5 3/4	3 29/32	10 5/16	8	7 3/16	3/4	18.06
25	1 3/4	2	4 1/8	1 25/32	2 29/32	7	4 15/16	12 11/32	9 19/32	8 29/32	1 5/16	31.34
35	2	2 1/4	4 11/16	2 31/32	3 9/32	7 3/4	5 7/16	14 3/32	10 5/8	9 13/16	1 3/32	43.77
42.5	2 1/4	2 9/16	5 9/32	2 1/4	3 3/4	8 3/4	6 9/32	16 5/16	11 7/8	11 5/16	1 3/16	62.46
55	2 1/2	2 3/4	5 3/4	2 9/16	4 1/8	10 1/4	7 9/32	18 1/4	13	12 15/16	1 5/16	87.27
85	3	3 1/4	6 7/16	2 15/16	5	12 15/16	7 1/2	21 29/32	14 25/32	14	1 19/32	136.69

Green shading reflects rental inventory.

**NOTE:** Want to purchase this item instead?  
LGH is an authorized VanBeest Distributor



# Shackles

120 - 1,500 Ton Green Pin® bow Alloy Shackles with safety bolt



**Material:** bow and pin high tensile steel, Grade 8, quenched and tempered

**Safety Factor:** MBL equals 5 x WLL

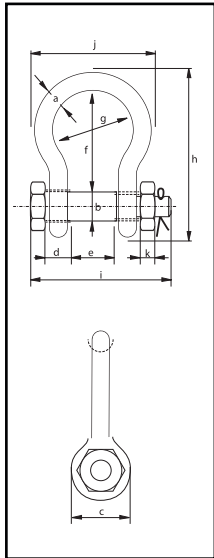
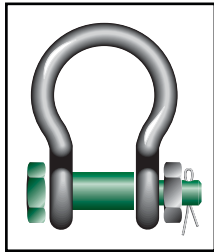
**Finish:** hot dipped galvanized

**Temperature Range:** -20°C up to +200° C

**Certificates:** at no extra charges this product can be supplied with a works certificate, certificate of basic raw material, manufacturer test certificate, EC Declaration of Conformity and all shackles starting from 150 tons are supplied with a Lloyd's Register of Shipping Certificate on proof load

**Note:** +5% forging tolerance on inside width and length

P-6036



Specifications (mm)												
Working load limit	Diameter bow	Diameter pin	Diameter eye	Width eye	Width inside	Length inside	Width bow	Length	Length bolt	Width bow	Thickness nut	Weight each
tons	a mm	b mm	c mm	d mm	e mm	f mm	g mm	h mm	i mm	j mm	k mm	kg
120	95	95	215	89	144	381	238	667	440	416	50	110
150	105	108	245	100	165	400	275	702	490	485	60	160
200	120	130	288	110	175	500	290	854	520	530	60	235
250	130	140	308	115	200	540	305	921	560	565	65	285
300	140	150	335	120	200	600	305	1,018	575	585	70	340
400	170	175	387	160	225	650	325	1,137	690	665	70	560
500	180	185	410	160	250	700	350	1,213	710	710	70	685
600	200	205	458	185	275	700	375	1,267	810	775	70	880
700	210	215	468	200	300	700	400	1,287	850	820	70	980
800	210	220	478	200	300	700	400	1,294	870	820	70	1,100
900	220	230	500	210	320	700	420	1,320	920	860	70	1,280
1000	240	240	530	210	340	700	420	1,360	940	900	70	1,460
1250	260	270	600	225	360	700	450	1,430	1,020	970	70	1,990
1500	280	290	640	225	360	700	450	1,480	1,060	1,010	70	2,400

Green shading reflects rental inventory.

Specifications (in)												
Working load limit	Diameter bow	Diameter pin	Diameter eye	Width eye	Width inside	Length inside	Width bow	Length	Length bolt	Width bow	Thickness nut	Weight each
tons	a in	b in	c in	d in	e in	f in	g in	h in	i in	j in	k in	lbs
120	3 3/4	3 3/4	8 1/2	3 17/32	5 11/18	15	9 11/32	26 9/32	17 5/16	16 3/8	2	243
150	4	4 1/4	9 5/8	3 15/16	6 17/32	15 3/4	10 13/16	27 5/8	19 9/32	19 1/8	2 3/8	353
200	4 3/4	5 1/8	11 11/32	4 5/16	6 29/32	19 11/16	11 7/16	33 5/8	20 1/2	20 7/8	2 3/8	518
250	4 7/8	5 1/2	12 1/8	4 17/32	7 7/8	21 9/32	12	36 9/32	22	22 1/4	2 9/16	628
300	5 5/16	5 7/8	13 3/16	4 23/32	7 7/8	23 5/8	12	40	22 5/8	23	2 3/4	750
400	6 1/2	6 7/8	15 1/4	6 5/16	8 7/8	25 19/32	12 25/32	44 3/4	27 5/32	26 1/4	2 3/4	1,235
500	6 7/8	7 1/4	16 5/32	6 5/16	9 13/16	27 1/2	13 25/32	47 3/4	28	28	2 3/4	1,510
600	7 5/8	8 1/16	18	7 9/32	10 13/16	27 1/2	14 3/4	49 7/8	31 7/8	30 1/22	2 3/4	1,940
700	8 1/16	8 1/2	18 7/16	7 7/8	11 13/16	27 1/2	15 3/4	50 11/16	33 1/2	32 3/8	2 3/4	2,161
800	8 1/4	8 5/8	18 13/16	7 7/8	11 13/16	21 1/2	15 3/4	51	34 1/4	32 3/8	2 3/4	2,425
900	8 5/8	9 1/16	19 11/16	8 9/32	12 19/32	24 1/2	16 9/16	52	36 1/4	33 7/8	2 3/4	2,822
1000	9 1/16	9 7/16	20 7/8	8 9/32	13 3/8	27 1/2	16 9/16	53 9/16	37	35 1/2	2 3/4	3,219
1250	10 1/4	10 5/8	23 5/8	8 7/8	14 5/32	27 1/2	17 23/32	56 5/16	40 1/4	38 1/4	2 3/4	4,387
1500	11	11 7/16	25 3/16	8 7/8	14 5/32	27 1/2	17 23/32	58 5/16	41 3/4	39 3/4	2 3/4	25,291

Green shading reflects rental inventory.

Sales@lgh-usa.com | Rigging



# Shackles

## 1/3 - 55 Ton Screw & Round Pin Specifications

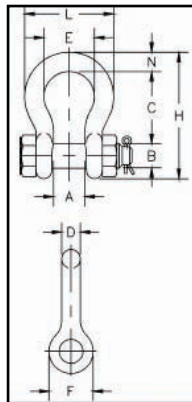
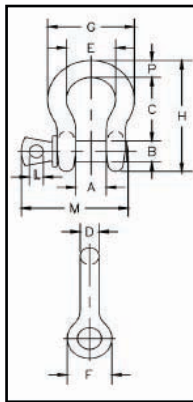
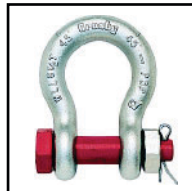


- Shackles are Quenched and Tempered and can meet DNV impact requirements of 42 joules at -20°C.
- Working Load Limit permanently shown on every shackle.
- Forged - Quenched and Tempered, with alloy pins.
- Capacities 1/3 thru 55 metric tons.
- Look for the Red Pin®...the mark of genuine Crosby quality.
- Shackles can be furnished proof tested with certificates to designated standards, such as ABS, DNV, Lloyds, or other certification.
- Charges for proof testing and material certification available when requested at the time of order.
- Hot Dip galvanized or Self Colored.
- Fatigue rated.

G-209 S-209



G-213 S-213



Specifications							
Nominal Size (in)	Working Load Limit* (t)	Model				Weight Each (lbs)	
		G-209 Galv.	S-209 S.C.	G-213 Galv.	S-213 S.C.	G-209 S-209	G-213 S-213
3/16	† 1/3	1018357	—	—	—	.06	—
1/4	1/2	1018375	1018384	1018017	1018026	.10	.13
5/16	3/4	1018393	1018400	1018035	1018044	.19	.18
3/8	1	1018419	1018428	1018053	1018062	.31	.29
7/16	1 1/2	1018437	1018446	1018071	1018080	.38	.38
1/2	2	1018455	1018464	1018099	1018106	.72	.71
5/8	3 1/4	1018473	1018482	1018115	1018124	1.37	1.50
3/4	4 3/4	1018491	1018507	1018133	1018142	2.35	2.32
7/8	6 1/2	1018516	1018525	1018151	1018160	3.62	3.49
1	8 1/2	1018534	1018543	1018179	1018188	5.03	5.00
1 1/8	9 1/2	1018552	1018561	1018197	1018204	7.41	6.97
1 1/4	12	1018570	1018589	1018213	1018222	9.50	9.75
1 3/8	13 1/2	1018598	1018605	1018231	1018240	13.53	13.25
1 1/2	17	1018614	1018623	1018259	1018268	17.20	17.25
1 3/4	25	1018632	1018641	1018277	1018286	27.78	29.46
2	35	1018650	1018669	1018295	1018302	45.00	45.75
2 1/2	† 55	1018678	1018687	—	—	85.75	—

Green shading reflects rental inventory.

Specifications															
Nominal Size (in)	Working Load Limit* (t)	Dimensions (in)												Tolerance + / -	
		A	B	C	D	E	F	G	H	L	M	N	P	C	A
3/16	† 1/3	.38	.25	.88	.19	.60	.56	.98	1.47	.16	1.12	—	.19	.06	.06
1/4	1/2	.47	.31	1.13	.25	.78	.61	1.28	1.84	.19	1.38	1.34	.25	.06	.06
5/16	3/4	.53	.38	1.22	.31	.84	.75	1.47	2.09	.22	1.66	1.59	.31	.06	.06
3/8	1	.66	.44	1.44	.38	1.03	.91	1.78	2.49	.25	2.03	1.86	.38	.13	.06
7/16	1 1/2	.75	.50	1.69	.44	1.16	1.06	2.03	2.91	.31	2.38	2.13	.44	.13	.06
1/2	2	.81	.63	1.88	.50	1.31	1.19	2.31	3.28	.38	2.69	2.38	.50	.13	.06
5/8	3 1/4	1.06	.75	2.38	.63	1.69	1.50	2.94	4.19	.44	3.34	2.91	.69	.13	.06
3/4	4 3/4	1.25	.88	2.81	.75	2.00	1.81	3.50	4.97	.50	3.97	3.44	.81	.25	.06
7/8	6 1/2	1.44	1.00	3.31	.88	2.28	2.09	4.03	5.83	.50	4.50	3.81	.97	.25	.06
1	8 1/2	1.69	1.13	3.75	1.00	2.69	2.38	4.69	6.56	.56	5.07	4.53	1.06	.25	.06
1 1/8	9 1/2	1.81	1.25	4.25	1.16	2.91	2.69	5.16	7.47	.63	5.59	5.13	1.25	.25	.06
1 1/4	12	2.03	1.38	4.69	1.29	3.25	3.00	5.75	8.25	.69	6.16	5.50	1.38	.25	.06
1 3/8	13 1/2	2.25	1.50	5.25	1.42	3.63	3.31	6.38	9.16	.75	6.84	6.13	1.50	.25	.13
1 1/2	17	2.38	1.63	5.75	1.54	3.88	3.63	6.88	10.00	.81	7.35	6.50	1.62	.25	.13
1 3/4	25	2.88	2.00	7.00	1.84	5.00	4.19	8.86	12.34	1.00	9.08	7.75	2.25	.25	.13
2	35	3.25	2.25	7.75	2.08	5.75	4.81	9.97	13.68	1.22	10.34	8.75	2.40	.25	.13
2 1/2	† 55	4.13	2.75	10.50	2.71	7.25	5.69	12.87	17.84	1.38	13.00	—	3.13	.25	.25

† Furnished in screw pin only.

\*Note: Maximum Proof Load is 2.0 times the working load limit. Minimum ultimate strength is 6 times the Working load limit.

Green shading reflects rental inventory.



# Shackles

## 1/2 - 55 Ton Screw & Round Pin Forged Chain Shackles Specifications

- Shackles are Quenched and Tempered and can meet DNV impact requirements of 42 joules at -20°C.
- Working Load Limit permanently shown on every shackle.
- Forged - Quenched and Tempered, with alloy pins.
- Capacities 1/3 thru 55 metric tons.
- Look for the Red Pin®...the mark of genuine Crosby quality.
- Shackles can be furnished proof tested with certificates to designated standards, such as ABS, DNV, Lloyds, or other certification.
- Charges for proof testing and material certification available when requested at the time of order.
- Hot Dip galvanized or Self Colored.
- Fatigue rated.



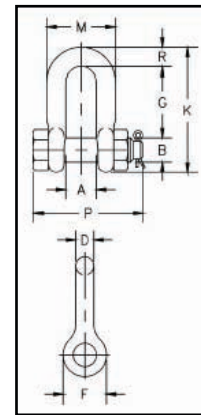
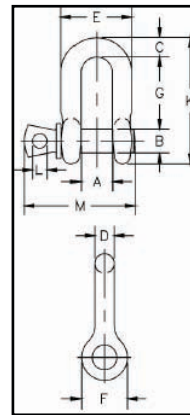
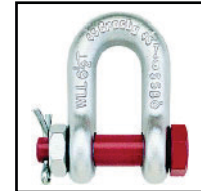
Specifications							
Nominal Size (in)	Working Load Limit* (t)	Model				Weight Each (lbs)	
		G-210 Galv.	S-210 S.C.	G-215 Galv.	S-215 S.C.	G-210 S-210	G-215 S-215
1/4	1/2	1019150	1019169	1018810	1018829	.11	.10
5/16	3/4	1019178	1019187	1018838	1018847	.17	.18
3/8	1	1019196	1019203	1018856	1018865	.28	.25
7/16	1 1/2	1019212	1019221	1018874	1018883	.43	.40
1/2	2	1019230	1019249	1018892	1018909	.59	.50
5/8	3 1/4	1019258	1019267	1018918	1018927	1.25	1.21
3/4	4 3/4	1019276	1019285	1018936	1018945	2.63	2.00
7/8	6 1/2	1019294	1019301	1018954	1018963	3.16	3.28
1	8 1/2	1019310	1019329	1018972	1018981	4.75	4.75
1 1/8	9 1/2	1019338	1019347	1018990	1019007	6.75	6.30
1 1/4	12	1019356	1019365	1019016	1019025	9.06	9.00
1 3/8	13 1/2	1019374	1019383	1019034	1019043	11.63	12.00
1 1/2	17	1019392	1019409	1019052	1019061	15.95	16.15
1 3/4	25	1019418	1019427	1019070	1019089	26.75	29.96
2	35	1019436	1019445	1019098	1019105	42.31	43.25
2 1/2	† 55	1019454	1019463	—	—	71.75	—

Green shading reflects rental inventory.

G-210 S-210



G-215 S-215



Specifications														
Nominal Size (in)	Working Load Limit* t	Dimensions (in)											Tolerance + / -	
		A	B	C	D	E	F	G	K	L	M	N	G	A
1/4	1/2	.47	.31	.25	.25	.97	.61	.88	1.59	.19	1.38	1.34	.06	.06
5/16	3/4	.53	.38	.31	.31	1.16	.75	1.03	1.91	.22	1.66	1.59	.06	.06
3/8	1	.66	.44	.38	.38	1.41	.91	1.25	2.30	.25	2.03	1.86	.13	.06
7/16	1 1/2	.75	.50	.44	.44	1.63	1.06	1.44	2.66	.31	2.38	2.13	.13	.06
1/2	2	.81	.63	.50	.50	1.81	1.19	1.63	3.03	.38	2.69	2.38	.13	.06
5/8	3 1/4	1.06	.75	.62	.63	2.31	1.50	2.00	3.75	.44	3.34	2.91	.13	.06
3/4	4 3/4	1.25	.88	.81	.75	2.75	1.81	2.38	4.53	.50	3.97	3.44	.25	.06
7/8	6 1/2	1.44	1.00	.97	.88	3.19	2.09	2.81	5.33	.50	4.50	3.81	.25	.06
1	8 1/2	1.69	1.13	1.00	1.00	3.69	2.38	3.19	5.94	.56	5.07	4.53	.25	.06
1 1/8	9 1/2	1.81	1.25	1.25	1.13	4.06	2.69	3.58	6.78	.63	5.59	5.13	.25	.06
1 1/4	12	2.03	1.38	1.38	1.25	4.53	3.00	3.94	7.50	.69	6.16	5.50	.25	.13
1 3/8	13 1/2	2.25	1.50	1.50	1.38	5.00	3.31	4.38	8.28	.75	6.84	6.13	.25	.13
1 1/2	17	2.38	1.63	1.62	1.50	5.38	3.62	4.81	9.06	.81	7.35	6.50	.25	.13
1 3/4	25	2.88	2.00	2.12	1.75	6.38	4.19	5.75	10.97	1.00	9.08	7.75	.25	.13
2	35	3.25	2.25	2.00	2.00	7.25	4.81	6.75	12.28	1.22	10.34	8.75	.25	.13
2 1/2	† 55	4.13	2.75	2.62	2.62	9.38	5.69	8.00	14.84	1.38	13.00	—	.25	.25

† Furnished in screw pin only.

\*Note: Maximum Proof Load is 2.0 times the working load limit. Minimum ultimate strength is 6 times the Working load limit.

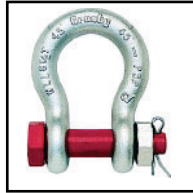
# Shackles

## 1/3 - 150 Ton Bolt - Type Shackles Specifications

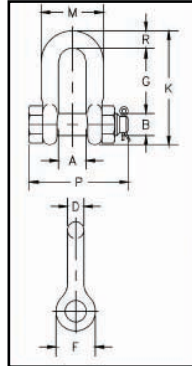
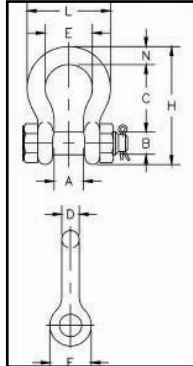
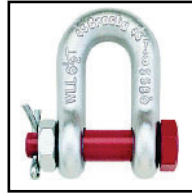
- Working Load Limit permanently shown on every shackle.
- Forged - Quenched and Tempered, with alloy pins.
- Capacities 1/3 thru 55 metric tons.
- Look for the Red Pin®...the mark of genuine Crosby quality.
- Shackles 55 metric tons and smaller can be furnished proof tested with certificates to designated standards, such as ABS, DNV, Lloyds, or other certification.
- Certification must be requested at time of order.
- Shackles 85 metric tons and larger can be provided as follows: Non Destructive Tested, Serialized Pin and Bow, Material Certification (Chemical), Certification must be requested at time of order.
- Hot Dip galvanized or Self Colored.
- Fatigue rated.



G-2130 S-2130



G-2150 S-2150



Specifications							
Nominal Shackle Size (in)	Working Load Limit* (t)	Model				2130 Weight Each (lbs)	2150 Weight Each (lbs)
		G-2130 Galv.	S-2130 S.C.	G-2150 Galv.	S-2150 S.C.		
3/16	1/3**	1019464	—	—	—	.06	—
1/4	1/2	1019466	—	1019768	—	.11	.13
5/16	3/4	1019468	—	1019770	—	.22	.23
3/8	1	1019470	—	1019772	—	.33	.33
7/16	1 1/2	1019471	—	1019774	—	.49	.49
1/2	2	1019472	1019481	1019775	1019784	.79	.75
5/8	3 1/4	1019490	1019506	1019793	1019800	1.68	1.47
3/4	4 3/4	1019515	1019524	1019819	1019828	2.72	2.52
7/8	6 1/2	1019533	1019542	1019837	1019846	3.95	3.85
1	8 1/2	1019551	1019560	1019855	1019864	5.66	5.55
1 1/8	9 1/2	1019579	1019588	1019873	1019882	8.27	7.60
1 1/4	12	1019597	1019604	1019891	1019908	11.71	10.81
1 3/8	13 1/2	1019613	1019622	1019917	1019926	15.83	13.75
1 1/2	17	1019631	1019640	1019935	1019944	20.80	18.50
1 3/4	25	1019659	1019668	1019953	1019962	33.91	31.40
2	35	1019677	1019686	1019971	1019980	52.25	46.75
2 1/2	55	1019695	1019702	1019999	1020004	98.25	85.00
3	† 85**	1019711	—	1020013	—	154.00	124.25
3 1/2	† 120**	1019739	—	—	—	265.00	—
4	† 150**	1019757	—	—	—	338.00	—

Green shading reflects rental inventory.

Specifications																	
Nominal Shackle Size (in)	Working Load Limit* t	Dimensions (in)														Tolerance + / -	
		A	B	C	D	E	F	G	H	K	L	M	N	P	R	C & G	A
3/16	1/3**	.38	.25	.88	.19	.60	.56	—	1.47	—	.98	—	.19	1.29	—	.06	.06
1/4	1/2	.47	.31	1.13	.25	.78	.61	.75	1.84	1.59	1.28	.97	.25	1.56	.25	.06	.06
5/16	3/4	.53	.38	1.22	.31	.84	.75	1.00	2.09	1.91	1.47	1.16	.31	1.82	.31	.06	.06
3/8	1	.66	.44	1.44	.38	1.03	.91	1.22	2.49	2.30	1.78	1.41	.38	2.17	.38	.13	.06
7/16	1 1/2	.75	.50	1.69	.44	1.16	1.06	1.42	2.91	2.66	2.03	1.62	.44	2.51	.44	.13	.06
1/2	2	.81	.63	1.88	.50	1.31	1.19	1.63	3.28	3.03	2.31	1.81	.50	2.80	.50	.13	.06
5/8	3 1/4	1.06	.75	2.38	.63	1.69	1.50	2.00	4.19	3.75	2.94	2.31	.69	3.53	.63	.13	.06
3/4	4 3/4	1.25	.88	2.81	.75	2.00	1.81	2.38	4.97	4.53	3.50	2.75	.81	4.07	.81	.25	.06
7/8	6 1/2	1.44	1.00	3.31	.88	2.28	2.09	2.81	5.83	5.33	4.03	3.19	.97	4.71	.97	.25	.06
1	8 1/2	1.69	1.13	3.75	1.00	2.69	2.38	3.19	6.56	5.94	4.69	3.69	1.06	5.31	1.00	.25	.06
1 1/8	9 1/2	1.81	1.25	4.25	1.13	2.91	2.69	3.58	7.47	6.78	5.16	4.06	1.25	5.90	1.25	.25	.06
1 1/4	12	2.03	1.38	4.69	1.25	3.25	3.00	3.94	8.25	7.50	5.75	4.53	1.38	6.51	1.38	.25	.06
1 3/8	13 1/2	2.25	1.50	5.25	1.38	3.63	3.31	4.38	9.16	8.28	6.38	5.00	1.50	7.21	1.50	.25	.13
1 1/2	17	2.38	1.63	5.75	1.50	3.88	3.63	4.81	10.00	9.06	6.88	5.38	1.62	7.73	1.62	.25	.13
1 3/4	25	2.88	2.00	7.00	1.75	5.00	4.19	5.75	12.34	10.97	8.86	6.38	2.25	9.05	2.12	.25	.13
2	35	3.25	2.25	7.75	2.00	5.75	4.81	6.75	13.68	12.28	9.97	7.25	2.40	10.41	2.00	.25	.13
2 1/2	55	4.13	2.75	10.50	2.62	7.25	5.69	8.00	17.84	14.84	12.87	9.38	3.13	13.56	2.62	.25	.25
3	† 85**	5.00	3.25	13.00	3.00	7.88	6.50	8.50	21.50	16.88	14.36	11.00	3.62	16.50	3.50	.25	.25
3 1/2	† 120**	5.25	3.75	14.63	3.62	9.00	8.00	—	24.63	—	16.50	—	4.12	19.00	—	.25	.25
4	† 150**	5.50	4.25	14.50	4.10	10.00	9.00	—	25.69	—	18.42	—	4.56	19.75	—	.25	.25

\*Note: Maximum Proof Load is 2.0 times the working load limit. Minimum ultimate strength is 6 times the Working load limit.

\*\*Furnished in Anchor style only.

† Individually Proof Tested with certification and furnished with round head bolts with welded handles.



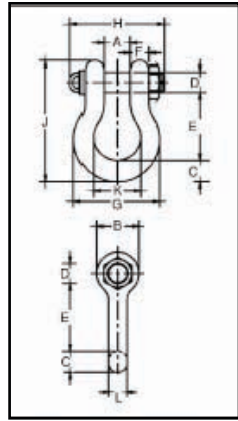
# Shackles

## 30 - 400 Ton Bolt - Type Alloy Anchor Shackles



- Shackles are Quenched and Tempered and can meet DNV impact requirements of 42 joules at -20°C.
- Working Load Limit is permanently shown on every shackle.
- Alloy bows, Alloy bolts.
- Quenched and Tempered.
- All sizes are individually proof tested to 2.0 times the Working Load Limit.
- Shackles 200 metric tons and larger are provided as follows.
  - Non Destructive Tested.
  - Serialized Pin and Bow.
  - Material Certification (chemical).
  - Certification must be requested at time of order.
- Forged Alloy Steel 30 thru 175 metric tons. Cast Alloy Steel 200 thru 400 metric tons.
- Pins are galvanized and painted red.

G-2140 S-2140



Specifications				
Nominal Shackle Size (in)	Working Load Limit* (t)	Model		2130 Weight Each (lbs)
		G-2140 Galv.	S-2140 S.C.	
1 1/2	30	1021110	1021129	20.8
1 3/4	40	1021138	1021147	33.9
2	55	1021156	1021165	52.0
2 1/2	85	1021174	1021183	96.0
3	120	1021192	—	178.0
3 1/2	† 150	1021218	—	265.0
4	† 175	1021236	—	338.0
4 3/4**	† 200	1021414	—	450.0
5**	† 250	1021432	—	600.0
6**	† 300	1021450	—	775.0
7**	† 400	1021478	—	1,102.0

Green shading reflects rental inventory.

Specifications														
Nominal Shackle Size (in)	Working Load Limit* (t)	Dimensions (in)											Tolerance + / -	
		A	B	C	D	E	F	G	H	J	K	L	A	E
1 1/2	30	2.38	3.62	1.62	1.63	5.75	1.39	6.88	7.75	10.00	3.88	1.54	.13	.25
1 3/4	40	2.88	4.19	2.25	2.00	7.00	1.75	8.86	9.06	12.34	5.00	1.84	.13	.25
2	55	3.25	4.81	2.40	2.25	7.75	2.00	9.97	10.41	13.68	5.75	2.08	.13	.25
2 1/2	85	4.12	5.69	3.12	2.75	10.50	2.62	12.87	13.56	17.84	7.25	2.71	.25	.25
3	120	5.00	6.50	3.62	3.25	13.00	3.00	14.36	16.50	21.50	7.88	3.11	.25	.25
3 1/2	† 150	5.25	8.00	4.12	3.75	14.63	3.75	16.50	19.00	24.62	9.00	3.62	.25	.25
4	† 175	5.50	9.00	4.56	4.25	14.50	4.00	18.42	19.75	25.69	10.00	4.10	.25	.25
4 3/4**	† 200	7.25	10.50	6.00	4.75	15.62	3.75	21.00	20.50	29.25	11.00	4.50	.25	.25
5**	† 250	8.50	12.00	6.50	5.00	20.00	3.88	24.50	21.97	35.00	13.00	4.50	.25	.25
6**	† 300	8.38	12.00	6.75	6.00	19.50	4.75	25.00	24.35	35.25	13.00	5.00	.25	.25
7**	† 400	8.25	14.00	7.25	7.00	22.50	6.50	26.00	27.97	40.25	13.00	6.00	.25	.25

\*Note: Maximum Proof Load is 2.0 times the working load limit. Minimum Ultimate load is 4 times the Working Load limit on 200 thru 400 Metric Tons. For sizes 30 thru 175 Metric Tons, Minimum Ultimate Load is 5.4 times the Working Load Limit.

\*\*Cast Alloy Steel.

† Furnished with Round Head Bolts with welded handle.

Green shading reflects rental inventory.

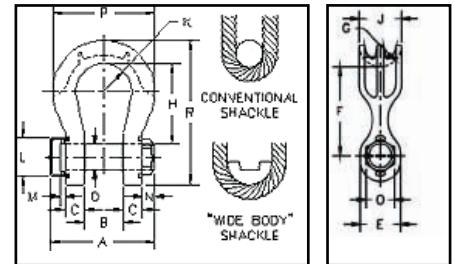
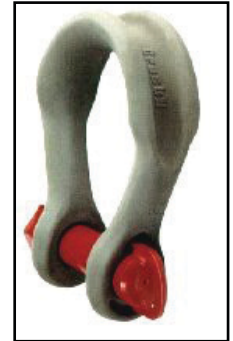
# Shackles

## 30 - 1,000 Ton Wide body shackles



- All sizes Quenched and Tempered for maximum strength.
- Forged alloy steel from 30 through 300 metric tons.
- Cast alloy steel from 400 through 1,000 metric tons.
- Sizes 300 tons and smaller are proof tested to 2 times the Working Load Limit.
- Sizes 400 tons and larger are tested to 1.33 times Working Load Limit.
- All ratings are in metric tons, embossed on side of bow.
- Bows and pins are furnished Dimetcoated. All Pins are Dimetcoated then painted red.
- Greatly improves wearability of wire rope slings.
- Can be used to connect HIGH STRENGTH Synthetic Web Slings, HIGH STRENGTH Synthetic Round Slings or Wire Rope Slings.
- Increase in shackle bow radius provides minimum 58% gain in sling bearing surface and eliminates need for a thimble.
- Increases usable sling strength minimum of 15%.
- Pin is non-rotating, with weld on handles for easier use (300t and larger).
- All 2160 shackles are individually proof tested and magnetic particle inspected. Crosby certification available at time of order.
- Crosby products meet or exceed all the requirements of ASME B30.26 including identification, ductility, design factor, proof load and temperature requirements. Importantly, Crosby products meet other critical performance requirements including fatigue life, impact properties and material traceability, not addressed by ASME B30.26.
- Shackles requiring ABS, DNV, Lloyds and other certifications are available upon special request and must be specified at time of order.
- Shackles are produced in accordance with certified lifting appliance requirements.
  - Non Destructive Testing.
  - Serialization / Identification.
  - Material Testing (Physical / Chemical / Charpy).
  - Proof Testing.

G-2160



### Specifications

Working Load Limit (t)*	G-2160 Model	Weight Each (lbs)	Dimensions (in)										
			A	B +/- .25	C	D +/- .02	E	G	H	J	K	P	R
† 30	1021575	25	7.73	2.37	1.38	1.63	3.50	2.50	7.00	3.13	2.50	8.50	11.38
† 40	1021584	35	9.32	2.88	1.75	2.00	4.00	1.75	8.13	3.75	3.00	10.62	13.62
† 55	1021593	71	10.41	3.25	2.00	2.27	4.63	2.00	9.42	4.50	3.50	12.26	15.63
† 75	1021290	99	14.37	4.13	2.12	2.75	5.00	2.55	11.60	4.75	3.64	12.28	18.41
† 125	1021307	161	16.51	5.12	2.56	3.15	5.71	3.15	14.43	5.91	4.33	14.96	22.65
† 200	1021316	500	20.67	5.91	3.35	4.12	7.28	4.33	18.98	8.07	5.41	19.49	29.82
† 300	1021325	811	24.20	7.38	4.00	5.25	9.25	5.47	23.69	10.38	6.31	23.38	37.26
†† 400	1021334	1,041	30.06	8.66	5.16	6.30	11.81	6.30	22.71	12.60	7.28	27.17	38.78
†† 500	1021343	1,378	32.99	9.84	5.59	7.09	12.52	6.69	24.88	13.38	8.86	31.10	42.71
†† 600	1021352	1,833	35.39	10.83	6.04	7.87	13.78	7.28	27.64	14.56	9.74	34.06	47.24
†† 700	1021361	2,446	38.91	11.81	6.59	8.46	14.80	7.87	29.04	15.74	10.63	37.01	50.17
†† 800	1021254	3,016	43.50	12.80	7.19	9.06	15.75	8.27	29.62	16.54	10.92	38.39	52.09
†† 900	1021389	3,436	43.60	13.78	7.78	9.84	16.93	8.66	30.02	17.32	11.51	40.35	54.04
†† 1000	1021370	4,022	45.98	14.96	8.33	10.63	17.72	9.06	30.02	18.12	12.11	43.32	55.32

\*Ultimate Load is 5 times the Working Load Limit.  
 † Forged Alloy Steel. Proof Load is 2 times the Working Load Limit.  
 †† Cast Alloy Steel. Proof Load is 1.33 times the Working Load Limit.  
 Green shading reflects rental inventory.

