

Modular Spreader Beams

Available to Rent from Lifting Gear Hire Corporation

Versatility

The Modular Spreader Beam System, available to rent from LGH is a range of beams that offer a modular span capability with a wide range of loading capacities.

Unlike fixed length spreader beams, the flexibility of the Modular Spreader Beam System means that even the most awkward loads can be accommodated. Using a range of different components together means an almost infinite number of configurations are possible to suit virtually any lifting scenario.

Designed for easy one-man assembly, the Modular Spreader Beam System is both portable and lightweight. Most of the beams and end units within the system can be easily manually handled on site without the need for lifting equipment, reducing both the time needed for set-up, and expensive crane time. The majority of the Modular Spreader Beam System components are light enough to be transported in a small van or pick-up, helping to cut transportation costs.

The Modular Spreader Beam System offers almost limitless versatility with spreaders ranging from 3 feet to 100 foot long in increments of 1 to 2 feet depending on which size spreader is used. The capacities range from 9 tons at a 20 foot span using Mod 24 spreaders, up to 250 tons at 100 feet using our new Mod 1000 spreaders. Accessories for the system are available including corner units for square and rectangular frames.

Benefits of Renting a Modular Spreader Beam from LGH

Lightweight portable design
Quick and easy assemble/dismantle
In most cases – a one man operation
Easily transported
Flexible configurations to meet a variety of demands
Uses conventional shackles and accessories
Reduced labor costs
Reduced downtime
Reduced crane time and associated rental costs
Reduced transportation costs
No need to invest, store and maintain large numbers of fixed spreaders – one system will do it all.
No specialist accessories required.

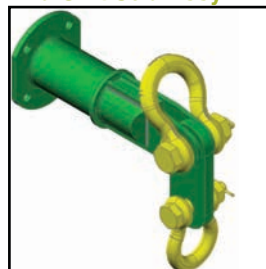
Strut



Drop Link



End Unit Sub-Assy



Modular Spreader Beams

Modular 24 - Beam Specifications



- Rated at 24 ton WLL at 11 ft. span. See Load Table for WLL at spans greater than 11 ft.
- Base sling angle, ∞ , 45 degrees or greater.
- End Units & Drop Links are rated at 12 tons (24 tons combined capacity).
- Bolt tightening torque: 110 pound-foot.

Table 1: Component List	
Part Ref:	Description
P1	End Unit (1 1/2 ft.)
P2	Drop Link
P3	6 ft. Strut
P3	4 ft. Strut
P3	2 ft. Strut
P3	1 ft. Strut
P4	17t Shackle
P5	12t Shackle
P6	M20x50 HT Bolts, Nuts & Washers

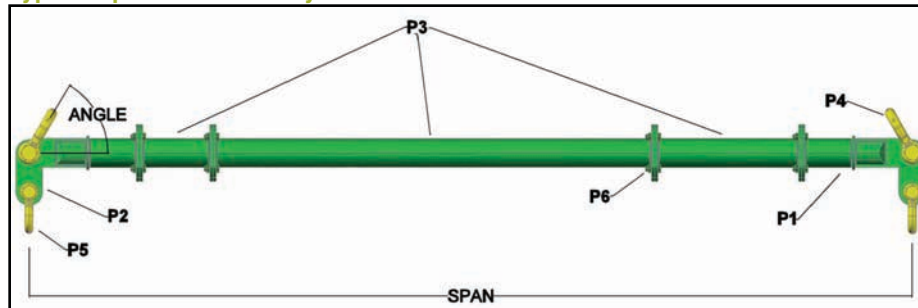
- Max number of struts allowed in spreader assembly: 5
- Assemble longer struts in the center of the spreader configuration
- Sling angle is crucial to safe use of spreader

Table 2: Load v. Span									
45° BSA			Recommended Configuration EU – End Unit (1 1/2 ft.)						Beam Weight (lbs.)
Span (ft.)	WLL (tons)	Min. Sling Length (ft.)	EU	EU	—	—	—	—	
3	24	2 1/4	EU	EU	—	—	—	—	154
4	24	3	EU	1	EU	—	—	—	183
5	24	3 3/4	EU	2	EU	—	—	—	194
6	24	4 1/2	EU	2	1	EU	—	—	223
7	24	5	EU	4	EU	—	—	—	216
8	24	5 3/4	EU	4	1	EU	—	—	245
9	24	6 1/2	EU	6	EU	—	—	—	238
10	24	7 1/4	EU	6	1	EU	—	—	267
11	24	8	EU	6	2	EU	—	—	278
12	22	8 1/2	EU	2	6	1	EU	—	307
13	20	9 1/4	EU	4	6	EU	—	—	300
14	18	10	EU	4	6	1	EU	—	329
15	15	10 3/4	EU	6	6	EU	—	—	322
16	13	11 1/2	EU	6	6	1	EU	—	351
17	12	12	EU	6	6	2	EU	—	362
18	11	12 3/4	EU	1	6	6	2	EU	391
19	10	13 1/2	EU	6	6	4	EU	—	384
20	9	14 1/4	EU	1	6	6	4	EU	413

Green shading reflects rental inventory.

- Beam weights calculated without top rigging

Typical Spreader Assembly



Modular Spreader Beams

Modular 50 - Beam Specifications

- Rated at 50 ton WLL at 20 ft. span. See Load Table for WLL at spans greater than 20 ft.
- Base sling angle, ∞ , 45 degrees or greater.
- End Units & Drop Links are rated at 25 tons (50 tons combined capacity).
- Bolt tightening torque: 110 pound-foot.

Table 1: Component List

Part Ref:	Description
P1	End Unit (1 1/2 ft.)
P2	Drop Link
P3	12 ft. Strut
P3	6 ft. Strut
P3	3 ft. Strut
P3	2 ft. Strut
P3	1 ft. Strut
P4	35t Shackle
P5	35t Shackle
P6	M20x65 HT Bolts, Nuts & Washers

- Max number of struts allowed in spreader assembly: 5
- Assemble longer struts in the center of the spreader configuration
- Sling angle is crucial to safe use of spreader

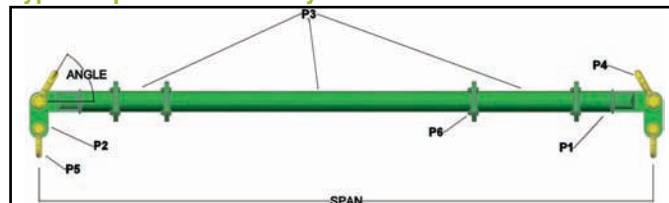


Table 2: Load v. Span

45° BSA			Recommended Configuration EU – End Unit (1 1/2 ft.)						Beam Weight (lbs.)
Span (ft.)	WLL (tons)	Min. Sling Length (ft.)							
3	50	2 1/4	EU	EU	—	—	—	—	428
4	50	3	EU	1	EU	—	—	—	501
5	50	3 3/4	EU	2	EU	—	—	—	521
6	50	4 1/2	EU	3	EU	—	—	—	538
7	50	5	EU	3	1	EU	—	—	611
8	50	5 3/4	EU	3	2	EU	—	—	631
9	50	6 1/2	EU	6	EU	—	—	—	598
10	50	7 1/4	EU	6	1	EU	—	—	671
11	50	8	EU	6	2	EU	—	—	693
12	50	8 1/2	EU	6	3	EU	—	—	708
13	50	9 1/4	EU	3	6	1	EU	—	781
14	50	10	EU	3	6	2	EU	—	801
15	50	10 3/4	EU	12	EU	—	—	—	715
16	50	11 1/2	EU	12	1	EU	—	—	788
17	50	12	EU	12	2	EU	—	—	808
18	50	12 3/4	EU	12	3	EU	—	—	825
19	50	13 1/2	EU	3	12	1	EU	—	898
20	50	14 1/4	EU	3	12	2	EU	—	918
21	47	15	EU	6	12	EU	—	—	885
22	43	15 3/4	EU	6	12	1	EU	—	958
23	38	16 1/4	EU	6	12	2	EU	—	978
24	34	17	EU	6	12	3	EU	—	995
25	32	17 3/4	EU	6	12	3	1	EU	1,068
26	30	18 1/2	EU	6	12	3	2	EU	1,088
27	27	19	EU	12	12	EU	—	—	1,002
28	25	20	EU	12	12	1	EU	—	1,075
29	23	20 1/2	EU	12	12	2	EU	—	1,095
30	21	21 1/4	EU	12	12	3	EU	—	1,112
31	19	22	EU	3	12	12	1	EU	1,185
32	18	22 3/4	EU	3	12	12	2	EU	1,205
33	16	23 1/2	EU	6	12	12	EU	—	1,172
34	15	24 1/4	EU	6	12	12	1	EU	1,245
35	14	25	EU	6	12	12	2	EU	1,265
36	12	25 1/2	EU	6	12	12	3	EU	1,282

Green shading reflects rental inventory.
 • Beam weights calculated without top rigging

Typical Spreader Assembly



Modular Spreader Beams

Modular 110 - Beam Specifications

- Rated at 110 ton WLL at 24 ft. span. See Load Table for WLL at spans greater than 24 ft.
- Base sling angle, ∞ , 45 degrees or greater.
- End Units & Drop Links are rated at 55 tons (110 tons combined capacity).
- Bolt tightening torque: 110 pound-foot.

Table 1: Component List	
Part Ref:	Description
P1	End Unit (3 ft.)
P2	Drop Link
P3	20 ft. Strut
P3	10 ft. Strut
P3	8 ft. Strut
P3	6 ft. Strut
P3	4 ft. Strut
P3	2 ft. Strut
P4	85t Shackle
P5	55t Shackle
P6	M20x65 HT Bolts, Nuts & Washers

- Max number of struts allowed in spreader assembly: 5
- Assemble longer struts in the center of the spreader configuration
- Sling angle is crucial to safe use of spreader

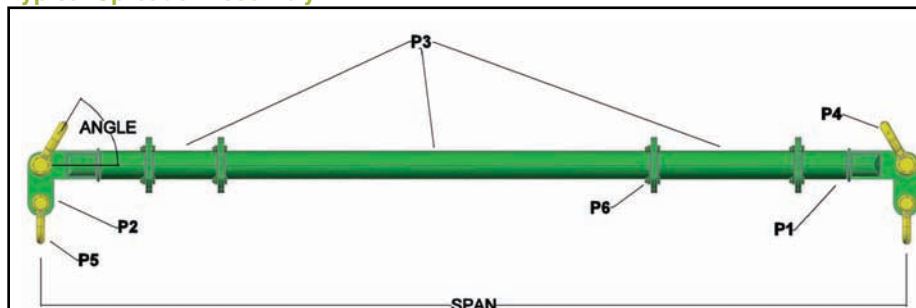


Table 2: Load v. Span								
45° BSA			Recommended Configuration EU – End Unit (3 ft.)					Beam Weight (lbs.)
Span (ft.)	WLL (tons)	Min. Sling Length (ft.)	EU	EU	—	—	—	
6	110	4 1/2	EU	EU	—	—	—	1,436
8	110	5 3/4	EU	2	EU	—	—	1,666
10	110	7 1/4	EU	4	EU	—	—	1,781
12	110	8 1/2	EU	6	EU	—	—	1,876
14	110	10	EU	8	EU	—	—	1,976
16	110	11 1/2	EU	10	EU	—	—	2,086
18	110	12 3/4	EU	10	2	EU	—	2,316
20	110	14 1/4	EU	10	4	EU	—	2,431
22	110	15 3/4	EU	10	6	EU	—	2,526
24	110	17	EU	10	8	EU	—	2,626
26	109	18 1/2	EU	20	EU	—	—	2,606
28	103	20	EU	20	2	EU	—	2,836
30	96	21 1/4	EU	20	4	EU	—	2,951
32	89	22 3/4	EU	20	6	EU	—	3,046
34	82	24 1/4	EU	20	8	EU	—	3,146
36	75	25 1/2	EU	20	10	EU	—	3,256
38	67	27	EU	2	20	10	EU	3,486
40	61	28 1/4	EU	4	20	10	EU	3,601
42	55	30	EU	6	20	10	EU	3,696
44	51	31 1/4	EU	8	20	10	EU	3,796
46	47	32 1/2	EU	20	20	EU	—	3,776
48	42	34	EU	20	20	2	EU	4,006
50	37	35 1/2	EU	20	20	4	EU	4,121
52	34	36 3/4	EU	20	20	6	EU	4,216

Green shading reflects rental inventory.

• Beam weights calculated without top rigging

Typical Spreader Assembly



Modular Spreader Beams

Modular 110H - Beam Specifications

- Rated at 170 ton WLL at 28 ft. span. See Load Table for WLL at spans greater than 28 ft.
- Base sling angle, ∞ , 60 degrees or greater.
- End Units & Drop Links are rated at 85 tons (170 tons combined capacity).
- Bolt tightening torque: 110 pound-foot.

Table 1: Component List	
Part Ref:	Description
P1	End Unit (3 ft.)
P2	Drop Link
P3	20 ft. Strut
P3	10 ft. Strut
P3	8 ft. Strut
P3	6 ft. Strut
P3	4 ft. Strut
P3	2 ft. Strut
P4	120t Shackle
P5	85t Shackle
P6	M20x65 HT Bolts, Nuts & Washers

- Max number of struts allowed in spreader assembly: 5
- Assemble longer struts in the center of the spreader configuration
- Sling angle is crucial to safe use of spreader

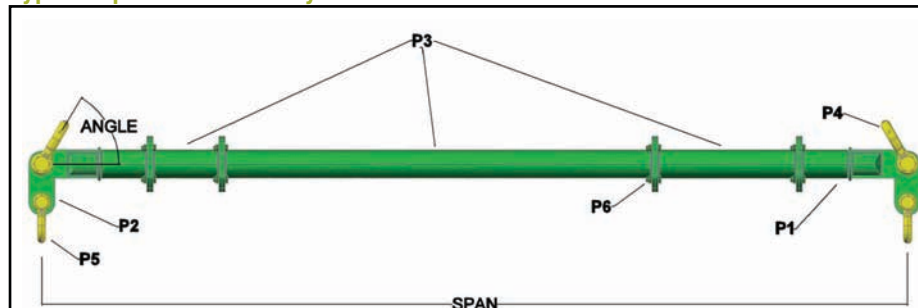


Table 2: Load v. Span								
60° BSA			Recommended Configuration					Beam Weight (lbs.)
Span (ft.)	WLL (tons)	Min. Sling Length (ft.)	EU – End Unit (3 ft.)					
6	170	6	EU	EU	—	—	—	1,914
8	170	8	EU	2	EU	—	—	2,144
10	170	10	EU	4	EU	—	—	2,259
12	170	12	EU	6	EU	—	—	2,354
14	170	14	EU	8	EU	—	—	2,454
16	170	16	EU	10	EU	—	—	2,565
18	170	18	EU	10	2	EU	—	2,794
20	170	20	EU	10	4	EU	—	2,909
22	170	22	EU	10	6	EU	—	3,004
24	170	24	EU	10	8	EU	—	3,104
26	170	26	EU	20	EU	—	—	3,084
28	170	28	EU	20	2	EU	—	3,314
30	166	30	EU	20	4	EU	—	3,429
32	154	32	EU	20	6	EU	—	3,524
34	141	34	EU	20	8	EU	—	3,624
36	130	36	EU	20	10	EU	—	3,734
38	116	38	EU	2	20	10	EU	3,964
40	105	40	EU	4	20	10	EU	4,079
42	95	42	EU	6	20	10	EU	4,174
44	88	44	EU	8	20	10	EU	4,274
46	82	46	EU	20	20	EU	—	4,254
48	72	48	EU	20	20	2	EU	4,484
50	65	50	EU	20	20	4	EU	4,599
52	59	52	EU	20	20	6	EU	4,694

Green shading reflects rental inventory.

• Beam weights calculated without top rigging

Typical Spreader Assembly



Modular Spreader Beams

Modular 400/250 - Beam Specifications

- Rated at 250 tons WLL at 68 ft. span (60 degrees Base Sling Angle).
- End Units & Drop Links are rated at 125 tons (250 tons combined lift).
- Base sling angle, α , 45 degrees or greater.

Table 1: Component List

Part Ref:	Description
P1	End Unit (125 Tons)
P2	Drop Link (125 Tons)
P3	20 ft. Strut
P3	10 ft. Strut
P3	5 ft. Strut
P3	4 ft. Strut
P3	3 ft. Strut
P3	2 ft. Strut
P3	1 ft. Strut
P4	200t Shackle
P5	125t Shackle
P6	M24x90 HT Bolts, Nuts & Washers

Table 2: Load v. Span

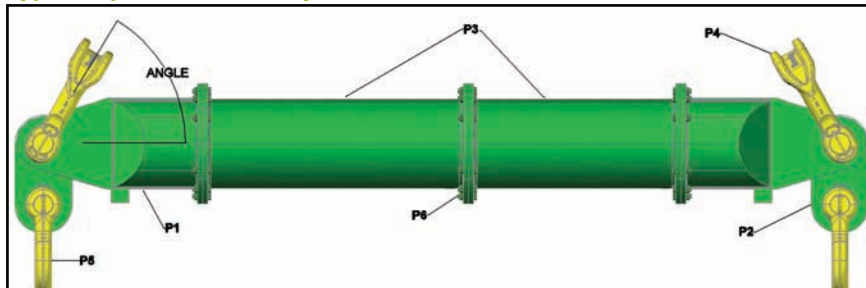
Span (ft.)	SWL/T @ 45°	Min. Sling Length (ft.) @ 45°	SWL/T @ 60°	Min. Sling Length (ft.) @ 60°	Recommended Configuration EU – End Unit (3 ft.)						Beam Weight (lbs.)	
					EU		EU		EU			
10	250	7.25	250	10	EU	4	EU				4,680	
12	250	8.50	250	12	EU	5	1	EU			5,423	
14	250	10	250	14	EU	5	3	EU			5,684	
16	250	11.50	250	16	EU	5	5	EU			5,944	
18	250	12.75	250	18	EU	10	2	EU			6,117	
20	250	14.25	250	20	EU	4	10	EU			6,424	
22	250	15.75	250	22	EU	1	10	5	EU		7,167	
24	250	17	250	24	EU	3	10	5	EU		7,428	
26	250	18.50	250	26	EU	5	10	5	EU		7,688	
28	250	20	250	28	EU	2	10	10	EU		7,861	
30	250	21.25	250	30	EU	4	10	10	EU		8,168	
32	250	22.75	250	32	EU	5	20	1	EU		8,472	
34	250	24.25	250	34	EU	5	20	3	EU		8,733	
36	250	25.50	250	36	EU	10	20	EU			8,465	
38	250	27	250	38	EU	10	20	2	EU		9,166	
40	250	28.25	250	40	EU	10	20	4	EU		9,473	
42	250	30	250	42	EU	1	10	20	5	EU	10,216	
44	250	31.25	250	44	EU	3	10	20	5	EU	10,477	
46	250	32.50	250	46	EU	10	20	10	EU		10,209	
48	250	34	250	48	EU	10	20	10	2	EU	10,910	
50	250	35.50	250	50	EU	20	20	4	EU		10,778	
52	250	36.75	250	52	EU	1	20	20	5	EU	11,521	
54	240	38.25	250	54	EU	3	20	20	5	EU	11,782	
56	225	39.50	250	56	EU	5	20	20	5	EU	12,042	
58	211	41	250	58	EU	2	10	20	20	EU	12,215	
60	198	42.50	250	60	EU	4	10	20	20	EU	12,522	
62	185	43.75	250	62	EU	1	10	20	20	5	EU	13,265
64	171	45.25	250	64	EU	3	10	20	20	5	EU	13,526
66	160	46.75	250	66	EU	10	20	20	10	EU	13,258	
68	149	48	250	68	EU	20	20	20	2	EU	13,520	
70	140	49.50	242	70	EU	20	20	20	4	EU	13,827	
72	132	51	227	72	EU	1	20	20	20	5	EU	14,570
74	122	52.50	211	74	EU	3	20	20	20	5	EU	14,831
76	113	53.75	197	76	EU	20	20	20	10	EU	14,563	



Green shading reflects rental inventory.

- Beam weights calculated without top rigging

Typical Spreader Assembly



Modular Spreader Beams

Modular 400/300 - Beam Specifications

- Rated at 300 tons WLL at 62 ft. span (60 degrees Base Slinge Angle).
- End Units & Drop Links are rated at 150 tons (300 tons combined lift).
- Base sling angle, α , 45 degrees or greater.

Table 1: Component List

Part Ref:	Description
P1	End Unit (150 Tons)
P2	Drop Link (150 Tons)
P3	20 ft. Strut
P3	10 ft. Strut
P3	5 ft. Strut
P3	4 ft. Strut
P3	3 ft. Strut
P3	2 ft. Strut
P3	1 ft. Strut
P4	200t Shackle
P5	150t Shackle
P6	M24x90 HT Bolts, Nuts & Washers

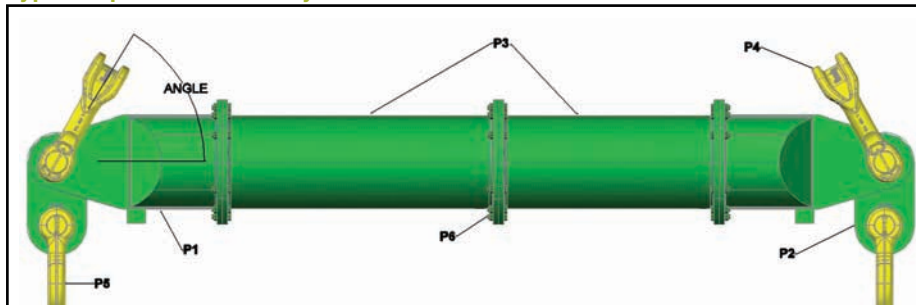
Table 2: Load v. Span

Span (ft.)	SWL/T @ 45°	Min. Sling Length (ft.) @ 45°	SWL/T @ 60°	Min. Sling Length (ft.) @ 60°	Recommended Configuration EU – End Unit (3 ft.)						Beam Weight (lbs.)	
					EU		EU		EU			
10	300	7.25	300	10	EU	4	EU				4,746	
12	300	8.50	300	12	EU	5	1	EU			5,489	
14	300	10	300	14	EU	5	3	EU			5,750	
16	300	11.50	300	16	EU	5	5	EU			6,010	
18	300	12.75	300	18	EU	10	2	EU			6,183	
20	300	14.25	300	20	EU	4	10	EU			6,490	
22	300	15.75	300	22	EU	1	10	5	EU		7,233	
24	300	17	300	24	EU	3	10	5	EU		7,494	
26	300	18.50	300	26	EU	5	10	5	EU		7,754	
28	300	20	300	28	EU	2	10	10	EU		7,927	
30	300	21.25	300	30	EU	4	10	10	EU		8,234	
32	300	22.75	300	32	EU	5	20	1	EU		8,538	
34	300	24.25	300	34	EU	5	20	3	EU		8,799	
36	300	25.50	300	36	EU	10	20	EU			8,531	
38	300	27	300	38	EU	10	20	2	EU		9,232	
40	300	28.25	300	40	EU	10	20	4	EU		9,539	
42	300	30	300	42	EU	1	10	20	5	EU	10,282	
44	300	31.25	300	44	EU	3	10	20	5	EU	10,543	
46	298	32.50	300	46	EU	10	20	10	EU		10,275	
48	283	34	300	48	EU	10	20	10	2	EU	10,976	
50	269	35.50	300	50	EU	20	20	4	EU		10,844	
52	256	36.75	300	52	EU	1	20	20	5	EU	11,587	
54	240	38.25	300	54	EU	3	20	20	5	EU	11,848	
56	225	39.50	300	56	EU	5	20	20	5	EU	12,108	
58	211	41	300	58	EU	2	10	20	20	EU	12,281	
60	198	42.50	300	60	EU	4	10	20	20	EU	12,588	
62	185	43.75	300	62	EU	1	10	20	20	5	EU	13,331
64	171	45.25	297	64	EU	3	10	20	20	5	EU	13,592
66	160	46.75	277	66	EU	10	20	20	10	EU	13,324	
68	149	48	258	68	EU	20	20	20	2	EU	13,586	
70	140	49.50	242	70	EU	20	20	20	4	EU	13,893	
72	132	51	227	72	EU	1	20	20	20	5	EU	14,636
74	122	52.50	211	74	EU	3	20	20	20	5	EU	14,897
76	113	53.75	197	76	EU	20	20	20	10	EU	14,629	



Green shading reflects rental inventory.
 • Beam weights calculated without top rigging

Typical Spreader Assembly



Modular Spreader Beams

Modular 400/600 - Beam Specifications

- Rated at 600 tons WLL at 40 ft. span (60 degrees Base Sling Angle).
- End Units & Drop Links are rated at 300 tons (600 tons combined lift).
- Base sling angle, ϕ , 45 degrees or greater.

Table 1: Component List

Part Ref:	Description
P1	End Unit (300 Tons)
P2	Drop Link (300 Tons)
P3	20 ft. Strut
P3	10 ft. Strut
P3	5 ft. Strut
P3	4 ft. Strut
P3	3 ft. Strut
P3	2 ft. Strut
P3	1 ft. Strut
P4	400t Shackle
P5	300t Shackle
P6	M24x90 HT Bolts, Nuts & Washers

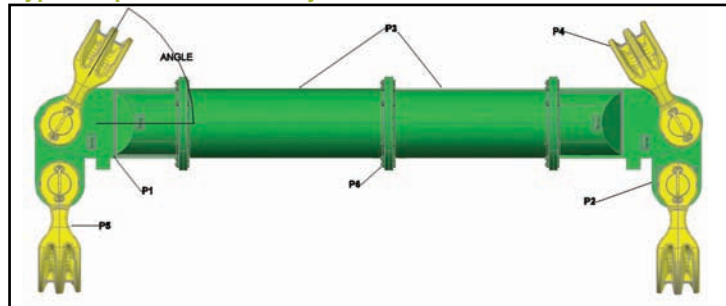
Table 2: Load v. Span

Span (ft.)	SWL/T @ 45°	Min. Sling Length (ft.) @ 45°	SWL/T @ 60°	Min. Sling Length (ft.) @ 60°	Recommended Configuration EU – End Unit (3 ft.)						Beam Weight (lbs.)	
					EU		EU		EU			
10	452	7.25	600	10	EU	4	EU				7,920	
12	449	8.50	600	12	EU	5	1	EU			8,663	
14	444	10	600	14	EU	5	3	EU			8,924	
16	440	11.50	600	16	EU	5	5	EU			9,184	
18	434	12.75	600	18	EU	10	2	EU			9,357	
20	430	14.25	600	20	EU	4	10	EU			9,664	
22	424	15.75	600	22	EU	1	10	5	EU		10,407	
24	417	17	600	24	EU	3	10	5	EU		10,668	
26	410	18.50	600	26	EU	5	10	5	EU		10,928	
28	404	20	600	28	EU	2	10	10	EU		11,101	
30	395	21.25	600	30	EU	4	10	10	EU		11,408	
32	386	22.75	600	32	EU	5	20	1	EU		11,712	
34	377	24.25	600	34	EU	5	20	3	EU		11,973	
36	367	25.50	600	36	EU	10	20	EU			11,705	
38	356	27	600	38	EU	10	20	2	EU		12,406	
40	345	28.25	600	40	EU	10	20	4	EU		12,713	
42	328	30	575	42	EU	1	10	20	5	EU	13,456	
44	313	31.25	541	44	EU	3	10	20	5	EU	13,717	
46	298	32.50	516	46	EU	10	20	10	EU		13,449	
48	283	34	490	48	EU	10	20	10	2	EU	14,150	
50	269	35.50	467	50	EU	20	20	4	EU		14,018	
52	256	36.75	443	52	EU	1	20	20	5	EU	14,761	
54	240	38.25	416	54	EU	3	20	20	5	EU	15,022	
56	225	39.50	390	56	EU	5	20	20	5	EU	15,282	
58	211	41	366	58	EU	2	10	20	20	EU	15,455	
60	198	42.50	343	60	EU	4	10	20	20	EU	15,762	
62	185	43.75	320	62	EU	1	10	20	20	5	EU	16,505
64	171	45.25	297	64	EU	3	10	20	20	5	EU	16,766
66	160	46.75	277	66	EU	10	20	20	10	EU	16,498	
68	149	48	258	68	EU	20	20	20	2	EU	16,760	
70	140	49.50	242	70	EU	20	20	20	4	EU	17,067	
72	132	51	227	72	EU	1	20	20	20	5	EU	17,810
74	122	52.50	211	74	EU	3	20	20	20	5	EU	18,071
76	113	53.75	197	76	EU	20	20	20	10	EU	17,803	



Green shading reflects rental inventory.
 • Beam weights calculated without top rigging

Typical Spreader Assembly



Modular Spreader Beams

Modular 400/700 - Beam Specifications

- Rated at 700 tons WLL at 28 ft. span (60 degrees Base Slinge Angle).
- End Units & Drop Links are rated at 350 tons (700 tons combined lift).
- Base sling angle, α , 45 degrees or greater.

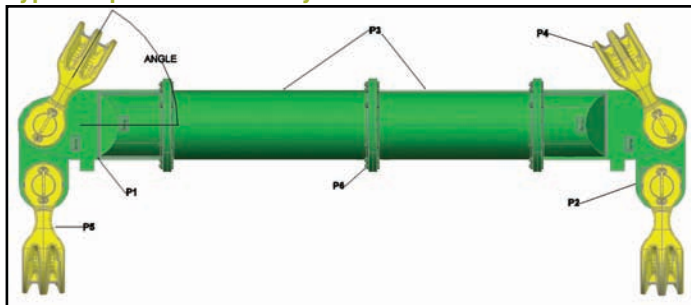
Table 1: Component List	
Part Ref:	Description
P1	End Unit (350 Tons)
P2	Drop Link (350 Tons)
P3	20 ft. Strut
P3	10 ft. Strut
P3	5 ft. Strut
P3	4 ft. Strut
P3	3 ft. Strut
P3	2 ft. Strut
P3	1 ft. Strut
P4	400t Shackle
P5	400t Shackle
P6	M24x90 HT Bolts, Nuts & Washers

Table 2: Load v. Span												
Span (ft.)	SWL/T @ 45°	Min. Sling Length (ft.) @ 45°	SWL/T @ 60°	Min. Sling Length (ft.) @ 60°	Recommended Configuration EU – End Unit (3 ft.)							Beam Weight (lbs.)
					EU	4	EU					
10	452	7.25	700	10	EU	4	EU					8,584
12	449	8.50	700	12	EU	5	1	EU				9,327
14	444	10	700	14	EU	5	3	EU				9,588
16	440	11.50	700	16	EU	5	5	EU				9,848
18	434	12.75	700	18	EU	10	2	EU				10,021
20	430	14.25	700	20	EU	4	10	EU				10,328
22	424	15.75	700	22	EU	1	10	5	EU			11,071
24	417	17	700	24	EU	3	10	5	EU			11,332
26	410	18.50	700	26	EU	5	10	5	EU			11,592
28	404	20	700	28	EU	2	10	10	EU			11,765
30	395	21.25	684	30	EU	4	10	10	EU			12,072
32	386	22.75	669	32	EU	5	20	1	EU			12,376
34	377	24.25	653	34	EU	5	20	3	EU			12,637
36	367	25.50	636	36	EU	10	20	EU				12,369
38	356	27	617	38	EU	10	20	2	EU			13,070
40	345	28.25	600	40	EU	10	20	4	EU			13,377
42	328	30	575	42	EU	1	10	20	5	EU		14,120
44	313	31.25	541	44	EU	3	10	20	5	EU		14,381
46	298	32.50	516	46	EU	10	20	10	EU			14,113
48	283	34	490	48	EU	10	20	10	2	EU		14,814
50	269	35.50	467	50	EU	20	20	4	EU			14,682
52	256	36.75	443	52	EU	1	20	20	5	EU		15,425
54	240	38.25	416	54	EU	3	20	20	5	EU		15,686
56	225	39.50	390	56	EU	5	20	20	5	EU		15,946
58	211	41	366	58	EU	2	10	20	20	EU		16,119
60	198	42.50	343	60	EU	4	10	20	20	EU		16,426
62	185	43.75	320	62	EU	1	10	20	20	5	EU	17,169
64	171	45.25	297	64	EU	3	10	20	20	5	EU	17,430
66	160	46.75	277	66	EU	10	20	20	10	EU		17,162
68	149	48	258	68	EU	20	20	20	2	EU		17,424
70	140	49.50	242	70	EU	20	20	20	4	EU		17,731
72	132	51	227	72	EU	1	20	20	20	5	EU	18,474
74	122	52.50	211	74	EU	3	20	20	20	5	EU	18,735
76	113	53.75	197	76	EU	20	20	20	10	EU		18,467

Green shading reflects rental inventory.
 • Beam weights calculated without top rigging



Typical Spreader Assembly



Modular Spreader Beams

Modular 1000/250 - Beam Specifications



- Rated at 250 tons WLL at 100 ft. span (60 degrees Base Slinge Angle).
- End Units & Drop Links are rated at 125 tons (250 tons combined lift).
- Base sling angle, ϕ , 45 degrees or greater.

Table 1: Component List

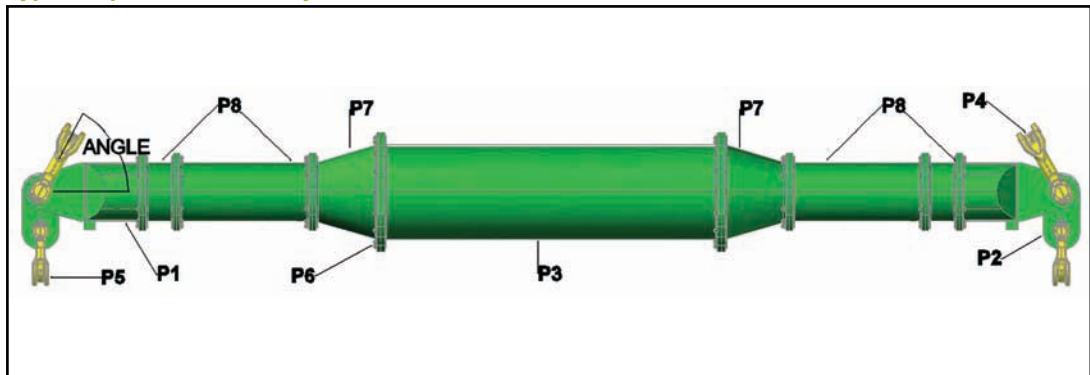
Part Ref.	Description
P1	End Unit (125 Tons)
P2	Drop Link (125 Tons)
P3	30 ft. Strut
P3	20 ft. Strut
P3	10 ft. Strut
P3	5 ft. Strut
P7	Cone Adaptor
P8	Modular 400 Struts
P4	200t Widebody Shackle
P5	125t Widebody Shackle
P6	M24 Bolts, Nuts & Washers

Table 2: Load v. Span

Span (ft.)	SWL/T @ 45°	Min. Sling Length (ft.) @ 45°	SWL/T @ 60°	Min. Sling Length (ft.) @ 60°	Recommended Configuration								Beam Weight (lbs.)	
					EU – End Unit (3 ft.)		CA – Cone Adaptor (2 ft.)							
10	250	7.25	250	10	EU	CA	CA	EU						5,890
15	250	10.75	250	15	EU	CA	5	CA	EU					7,962
20	250	14.25	250	20	EU	CA	10	CA	EU					8,855
25	250	17.75	250	25	EU	CA	10	5	CA	EU				10,927
30	250	21.25	250	30	EU	CA	20	CA	EU					10,650
35	250	24.75	250	35	EU	CA	20	5	CA	EU				12,722
40	250	28.25	250	40	EU	CA	20	10	CA	EU				13,615
45	250	32.00	250	45	EU	CA	5	30	CA	EU				14,520
50	250	35.50	250	50	EU	CA	10	30	CA	EU				15,413
55	250	39.00	250	55	EU	CA	10	30	5	CA	EU			17,485
60	250	42.50	250	60	EU	CA	20	30	CA	EU				17,208
65	250	46.00	250	65	EU	CA	20	30	5	CA	EU			19,280
70	250	49.50	250	70	EU	CA	20	30	10	CA	EU			20,173
75	250	53.00	250	75	EU	CA	30	30	5	CA	EU			21,078
80	250	56.50	250	80	EU	CA	30	30	10	CA	EU			21,971
85	250	60.00	250	85	EU	CA	30	30	10	5	CA	EU		24,043
90	250	63.75	250	90	EU	CA	20	30	30	CA	EU			23,766
95	250	67.00	250	95	EU	CA	20	30	30	5	CA	EU		25,838
100	250	70.75	250	100	EU	CA	20	30	30	10	CA	EU		26,731

Green shading reflects rental inventory.
 Note: 1 ft. increments are available
 • Beam weights calculated without top rigging and may vary depending on strut configuration.

Typical Spreader Assembly



P8 represents Modular 400 struts used to create beam spans increased in 1 foot increments. Mod 400 struts can be inserted between the Mod 1000 Cone Adaptors and the Mod 400 End Units. However, the following restrictions apply:
 * At least 50% of the spreader must be Mod 1000 struts.
 * A maximum of 3 Mod 400 struts can be assembled per side.



Modular Spreader Beams

Modular 1000/300 - Beam Specifications



- Rated at 300 tons WLL at 100 ft. span (60 degrees Base Sling Angle).
- End Units & Drop Links are rated at 150 tons (300 tons combined lift).
- Base sling angle, α , 45 degrees or greater.

Table 1: Component List	
Part Ref:	Description
P1	End Unit (150 tons)
P2	Drop Link (150 tons)
P3	30 ft. Strut
P4	20 ft. Strut
P5	10 ft. Strut
P6	5 ft. Strut
P7	Cone Adaptor
P8	Modular 400 Struts
P10	200t Widebody Shackle
P11	150t Shackle
P12	M24 Bolts, Nuts & Washers

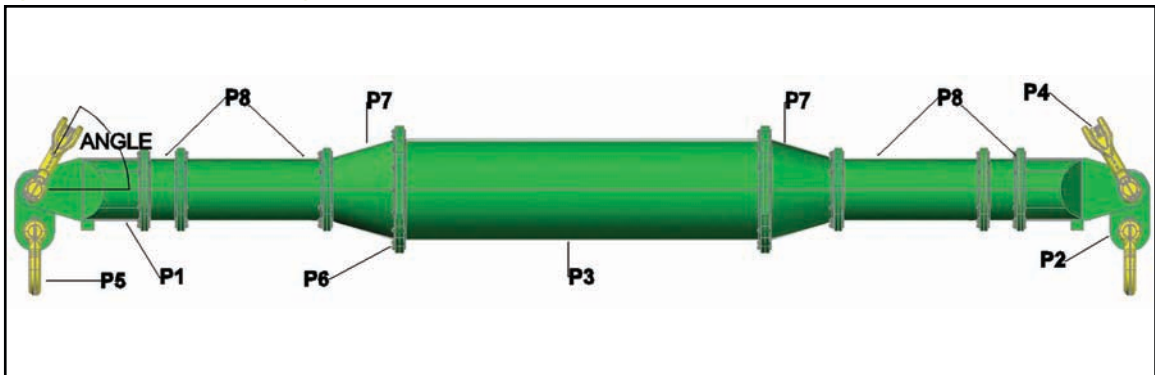
Table 2: Load v. Span													
Span (ft.)	SWL/T @ 45°	Min. Sling Length (ft.) @ 45°	SWL/T @ 60°	Min. Sling Length (ft.) @ 60°	Recommended Configuration EU – End Unit (3 ft.)								Beam Weight (lbs.)
					EU	CA	CA	EU					
10	300	7.25	300	10	EU	CA	CA	EU					6,098
15	300	10.75	300	15	EU	CA	5	CA	EU				8,170
20	300	14.25	300	20	EU	CA	10	CA	EU				9,063
25	300	17.75	300	25	EU	CA	10	5	CA	EU			12,930
30	300	21.25	300	30	EU	CA	20	CA	EU				10,858
35	300	24.75	300	35	EU	CA	20	5	CA	EU			12,930
40	300	28.25	300	40	EU	CA	20	10	CA	EU			13,823
45	300	32.00	300	45	EU	CA	5	30	CA	EU			14,728
50	300	35.50	300	50	EU	CA	10	30	CA	EU			15,621
55	300	39.00	300	55	EU	CA	10	30	5	CA	EU		17,693
60	300	42.50	300	60	EU	CA	20	30	CA	EU			17,422
65	300	46.00	300	65	EU	CA	20	30	5	CA	EU		19,488
70	300	49.50	300	70	EU	CA	20	30	10	CA	EU		20,381
75	300	53.00	300	75	EU	CA	30	30	5	CA	EU		21,286
80	300	56.50	300	80	EU	CA	30	30	10	CA	EU		22,179
85	300	60.00	300	85	EU	CA	30	30	10	5	CA	EU	24,251
90	300	63.75	300	90	EU	CA	20	30	30	CA	EU		23,974
95	300	67.00	300	95	EU	CA	20	30	30	5	CA	EU	26,046
100	300	70.75	300	100	EU	CA	20	30	30	10	CA	EU	26,939

Green shading reflects rental inventory.

Note: 1 ft. increments are available

• Beam weights calculated without top rigging and may vary depending on strut configuration.

Typical Spreader Assembly



P8 represents Modular 400 struts used to create beam spans increased in 1 foot increments.

Mod 400 struts can be inserted between the Mod 1000 Cone Adaptors and the Mod 400 End Units. However, the following restrictions apply:

* At least 50% of the spreader must be Mod 1000 struts.

* A maximum of 3 Mod 400 struts can be assembled per side.



Modular Spreader Beams

Modular 1000/600 - Beam Specifications



- Rated at 600 tons WLL at 80 ft. span (60 degrees Base Slinge Angle).
- End Units & Drop Links are rated at 300 tons (600 tons combined lift).
- Base sling angle, α , 45 degrees or greater.

Table 1: Component List

Part Ref:	Description
P1	End Unit (300 Tons)
P2	Drop Link (300 Tons)
P3	30 ft. Strut
P3	20 ft. Strut
P3	10 ft. Strut
P3	5 ft. Strut
P7	Cone Adaptor
P8	Modular 400 Struts
P4	400t Widebody Shackle
P5	300t Widebody Shackle
P6	M24 Bolts, Nuts & Washers

Table 2: Load v. Span

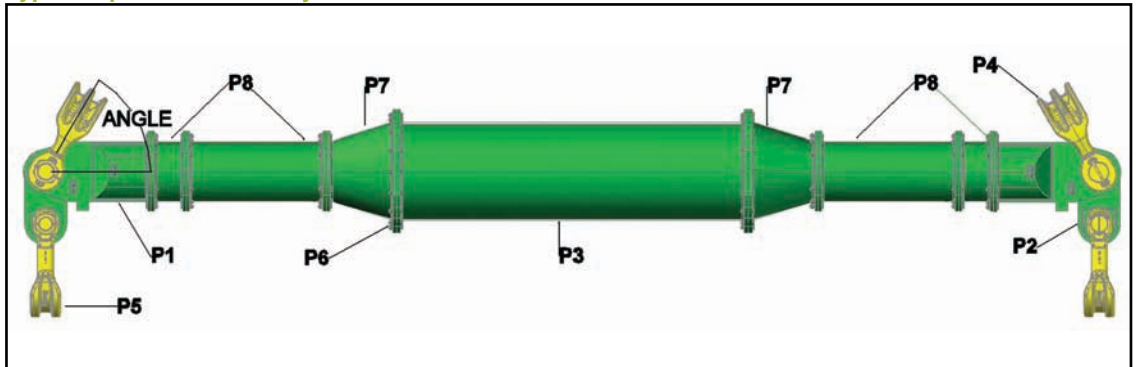
Span (ft.)	SWL/T @ 45°	Min. Sling Length (ft.) @ 45°	SWL/T @ 60°	Min. Sling Length (ft.) @ 60°	Recommended Configuration EU – End Unit (3 ft.)								Beam Weight (lbs.)
					EU	CA	CA	EU					
10	600	7.25	600	10	EU	CA	CA	EU					9,292
15	600	10.75	600	15	EU	CA	5	CA	EU				11,364
20	600	14.25	600	20	EU	CA	10	CA	EU				12,257
25	600	17.75	600	25	EU	CA	10	5	CA	EU			14,229
30	600	21.25	600	30	EU	CA	20	CA	EU				14,052
35	600	24.75	600	35	EU	CA	20	5	CA	EU			16,124
40	600	28.25	600	40	EU	CA	20	10	CA	EU			17,017
45	600	32.00	600	45	EU	CA	5	30	CA	EU			17,922
50	588	35.50	600	50	EU	CA	10	30	CA	EU			18,815
55	559	39.00	600	55	EU	CA	10	30	5	CA	EU		20,887
60	530	42.50	600	60	EU	CA	20	30	CA	EU			20,610
65	500	46.00	600	65	EU	CA	20	30	5	CA	EU		22,682
70	459	49.50	600	70	EU	CA	20	30	10	CA	EU		23,575
75	418	53.00	600	75	EU	CA	30	30	5	CA	EU		24,480
80	379	56.50	600	80	EU	CA	30	30	10	CA	EU		25,973
85	340	60.00	588	85	EU	CA	30	30	10	5	CA	EU	27,445
90	308	63.75	532	90	EU	CA	20	30	30	CA	EU		27,168
95	275	67.00	476	95	EU	CA	20	30	30	5	CA	EU	29,240
100	256	70.75	443	100	EU	CA	20	30	30	10	CA	EU	30,133

Green shading reflects rental inventory.

Note: 1 ft. increments are available

• Beam weights calculated without top rigging and may vary depending on strut configuration.

Typical Spreader Assembly



P8 represents Modular 400 struts used to create beam spans increased in 1 foot increments.

Mod 400 struts can be inserted between the Mod 1000 Cone Adaptors and the Mod 400 End Units. However, the following restrictions apply:

* At least 50% of the spreader must be Mod 1000 struts.

* A maximum of 3 Mod 400 struts can be assembled per side.



Modular Spreader Beams

Modular 1000/700 - Beam Specifications



- Rated at 700 tons WLL at 75 ft. span (60 degrees Base Slinge Angle).
- End Units & Drop Links are rated at 350 tons (700 tons combined lift).
- Base sling angle, α , 45 degrees or greater.

Table 1: Component List

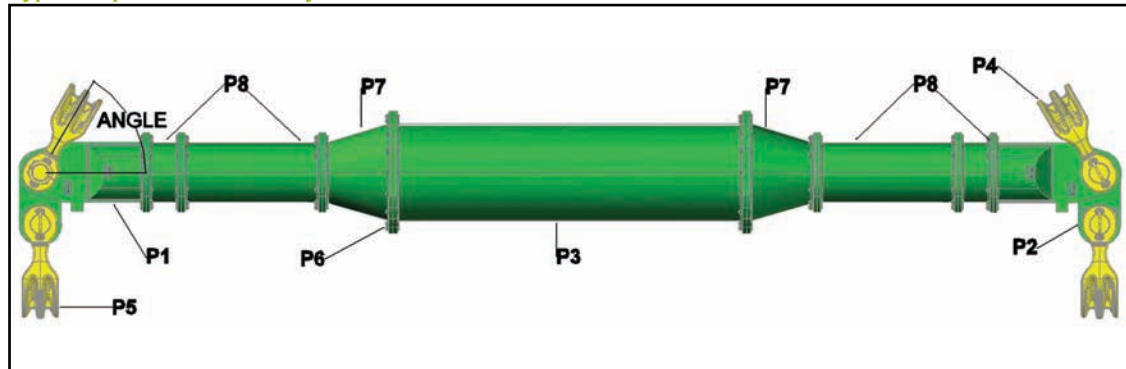
Part Ref:	Description
P1	End Unit (350 Tons)
P2	Drop Link (350 Tons)
P3	30 ft. Strut
P3	20 ft. Strut
P3	10 ft. Strut
P3	5 ft. Strut
P7	Cone Adaptor
P8	Modular 400 Struts
P4	400t Widebody Shackle
P5	400t Widebody Shackle
P6	M24 Bolts, Nuts & Washers

Table 2: Load v. Span

Span (ft.)	SWL/T @ 45°	Min. Sling Length (ft.) @ 45°	SWL/T @ 60°	Min. Sling Length (ft.) @ 60°	Recommended Configuration EU – End Unit (3 ft.)								Beam Weight (lbs.)
					EU	CA	CA	EU					
10	700	7.25	700	10	EU	CA	CA	EU					9,956
15	700	10.75	700	15	EU	CA	5	CA	EU				12,028
20	700	14.25	700	20	EU	CA	10	CA	EU				12,921
25	693	17.75	700	25	EU	CA	10	5	CA	EU			14,993
30	678	21.25	700	30	EU	CA	20	CA	EU				14,716
35	660	24.75	700	35	EU	CA	20	5	CA	EU			16,788
40	638	28.25	700	40	EU	CA	20	10	CA	EU			17,681
45	616	32.00	700	45	EU	CA	5	30	CA	EU			18,586
50	588	35.50	700	50	EU	CA	10	30	CA	EU			19,479
55	559	39.00	700	55	EU	CA	10	30	5	CA	EU		21,551
60	530	42.50	700	60	EU	CA	20	30	CA	EU			21,274
65	500	46.00	700	65	EU	CA	20	30	5	CA	EU		23,346
70	459	49.50	700	70	EU	CA	20	30	10	CA	EU		24,239
75	418	53.00	700	75	EU	CA	30	30	5	CA	EU		25,144
80	379	56.50	656	80	EU	CA	30	30	10	CA	EU		26,037
85	340	60.00	588	85	EU	CA	30	30	10	5	CA	EU	28,109
90	308	63.75	532	90	EU	CA	20	30	30	CA	EU		27,832
95	275	67.00	476	95	EU	CA	20	30	30	5	CA	EU	29,904
100	256	70.75	443	100	EU	CA	20	30	30	10	CA	EU	30,797

Green shading reflects rental inventory.
 Note: 1 ft. increments are available
 • Beam weights calculated without top rigging and may vary depending on strut configuration.

Typical Spreader Assembly



P8 represents Modular 400 struts used to create beam spans increased in 1 foot increments.
 Mod 400 struts can be inserted between the Mod 1000 Cone Adaptors and the Mod 400 End Units. However, the following restrictions apply:
 * At least 50% of the spreader must be Mod 1000 struts.
 * A maximum of 3 Mod 400 struts can be assembled per side.

Sales@lgh-usa.com | Rigging

