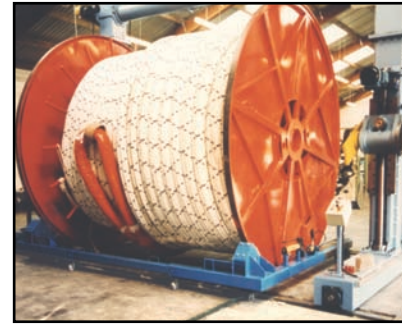


# Machine Skates

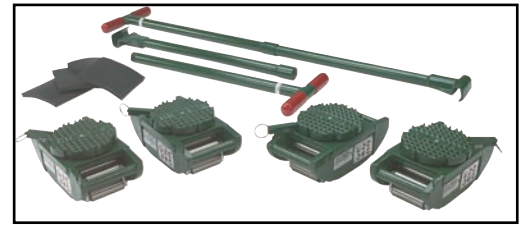
3.75 - 50 Ton FT Series

FT Series Specifications				
Kit / Set capacity (Tons)	Model	Kit / Set includes (all kits include steel cases)	Weight (lbs.)	Weight (kg.)
15	KRS-15-SLP	(4) 3.75-SLP Rollers; (2) KD48F Handles	203	92
15	RS-15-SLP	(4) 3.75-SLP Rollers; (2) H36F 36" Handles	156	71
15	KRS-15-SLD	(4) 3.75-SLD Rollers; (4) P-1 Preload Pads; (2) KD48F Handles	203	92
15	RS-15-SLD	(4) 3.75-SLD Rollers; (4) P-1 Preload Pads; (2) H36F 36" Handles	156	71
30	KRS-30-SLP	(4) 7.5-SLP Rollers; (2) KD48F Handles	215	98
30	RS-30-SLP	(4) 7.5-SLP Rollers; (2) H48F" Handles	172	78
30	KRS-30-SLD	(4) 7.5-SLD Rollers; (4) P-1 Preload Pads; (2) KD48F Handles	215	98
30	RS-30-SLD	(4) 7.5-SLD Rollers; (4) P-1 Preload Pads; (2) H48F 48" Handles	172	78
40	KRS-40-SLP	(4) 10-SLP Rollers; (2) KD48F Kit Size Handles	219	99
40	RS-40-SLP	(4) 10-SLP Rollers; (2) H48F 48" Handles	176	80
40	KRS-40-SLD	(4) 10-SLD Rollers; (4) P-1 Preload Pads; (2) KD48F Handles	219	99
40	RS-40-SLD	(4) 10-SLD Rollers; (4) P-1 Preload Pads; (2) H48F 48" Handles	176	80
60	KRS-60-SLP	(4) 15-SLP Rollers; (2) KD48F Kit Size Handles	255	116
60	RS-60-SLP	(4) 15-SLP Rollers; (2) H48F 48" Handles	212	96
60	KRS-60-SLD	(4) 15-SLD Rollers; (4) P-1 Preload Pads; (2) KD48F Handles	259	117
60	RS-60-SLD	(4) 15-SLD Rollers; (4) P-1 Preload Pads; (2) H48F 48" Handles	216	98
120	RS-120-SLP	(4) 30-SLP Rollers; (2) H60F 60" Handles	542	256
120	RS-120-SLD	(4) 30-SLD Rollers; (4) P-2 Preload Pads; (2) H60F 60" Handles	540	245
200	RS-200-SLP	(4) 50-SLP Rollers; (2) H60F 60" Handles	834	378
200	RS-200-SLD	(4) 50-SLD Rollers; (4) P-2 Preload Pads; (2) H60F 60" Handles	848	385

Green shading reflects rental inventory.



Deluxe FT Kit



Specifications											
Capacity (Tons)	Model	Top Style	Height		Width		Length		Weight		Contact Rolls
			in	mm	in	mm	in	mm	lbs	kg	
3.75*	3.75-SLP	Swivel locking padded	5	127	5-3/4	146	10-1/2	267	34	15	5
7.5*	7.5-SLP		5-1/4	133	5-3/4	146	10-1/2	267	38	17	5
10*	10-SLP		5-1/4	133	5-3/4	146	10-1/2	267	38	17	5
15	15-SLP		5-1/8	130	6-3/8	162	12-3/4	324	49	22	6
30*	30-SLP		8	203	8	203	15	381	122	55	6
50*	50-SLP		8-15/16	227	8	203	21	533	193	88	7
3.75*	3.75-SLD	Swivel locking with diamond steel grid	4-3/4	121	5-3/4	146	10-1/2	267	34	15	5
7.5*	7.5-SLD		5	127	5-3/4	146	10-1/2	267	37	17	5
10*	10-SLD		5	127	5-3/4	146	10-1/2	267	37	17	5
15	15-SLD		4-7/8	124	6-3/8	162	12-3/4	324	49	22	6
30	30-SLD		7-1/32	179	8	203	15	381	118	54	6
50	50-SLD		8-1/16	205	8	203	21	533	189	86	7
3.75*	3.75-SLS	Swivel locking with smooth steel	4-5/8	117	6	152	10-1/2	267	35	16	5
7.5*	7.5-SLS		4-7/8	124	6	152	10-1/2	267	38	17	5
10*	10-SLS		4-7/8	124	6	152	10-1/2	267	38	17	5
15	15-SLS		4-3/4	121	6-3/8	162	12-3/4	324	50	23	6
30	30-SLS		7-15/16	202	8	203	15	381	119	54	6
50	50-SLS		7-15/16	202	8	203	20-7/8	530	191	87	7
3.75*	3.75-RP	Rigid Padded	4-3/16	106	5-3/4	146	10-1/2	267	29	13	5
7.5*	7.5-RP		4-7/16	113	5-3/4	146	10-1/2	267	33	15	5
10*	10-RP		4-7/16	113	5-3/4	146	10-1/2	267	33	15	5
15	15-RP		4-5/16	110	6-3/8	162	12-3/4	324	42	19	6
30*	30-RP		6-3/4	171	8	203	15	381	107	49	6
50*	50-RP		7-3/4	197	8	203	21	533	179	81	7
3.75*	3.75-RD	Rigid with diamond steel grid	4-1/16**	103	5-5/8	143	10-1/2	267	29	13	5
7.5*	7.5-RD		4-5/16**	110	5-5/8	143	10-1/2	267	32	15	5
10*	10-RD		4-5/16**	110	5-3/4	146	10-1/2	267	32	15	5
15	15-RD		4-3/32**	104	6-3/8	162	12-3/4	324	38	17	6
30*	30-RD		6-1/8**	156	8	203	15	381	105	48	6
50*	50-RD		7-1/8**	181	8	203	21	533	176	80	7
3.75*	3.75-RS	Rigid with smooth steel	3-11/16	94	5-5/8	143	10-1/2	267	29	13	5
7.5*	7.5-RS		3-15/16	100	5-5/8	143	10-1/2	267	32	15	5
10*	10-RS		3-15/16	100	5-5/8	143	10-1/2	267	32	15	5
15	15-RS		3-13/16	97	6-3/8	162	12-3/4	324	43	20	6
30*	30-RS		5-3/4	146	8	203	15	381	105	48	6
50*	50-RS		6-3/4	171	8	203	21	533	176	80	7

\*Width dimension of top exceeds roller frame width.

\*\* Height to top of spike.

Green shading reflects rental inventory.



# Machine Skates

3.75 - 100 Ton ERS Series

ERS Series Specifications					
Kit / Set Capacity (Tons)	Model	Kit / Set includes (All Kits include steel cases)	Weight		
			lbs	kg	
15	KRS-15-ERSD	(4) 3.75-ERS Rollers (4) T-3.75-LD Swivel Locking Diamond Attachments (4) P-1 Preload Pads (2) KDH48E Kit Size Handles in Kit or (2) H36E 36" Handles in Set	181	82	
15	RS-15-ERSD		130	59	
20	KRS-20-ERSD	(4) 5-ERS Rollers (4) T-5-LD Swivel Locking Diamond Attachments (4) P-1 Preload Pads (2) KDH48E Kit Size Handle in Kit or (2) H48E 48" Handles in Set	201	91	
20	RS-20-ERSD		150	68	
40	KRS-40-ERSD	(4) 10-ERS Rollers (4) T-10-LD Swivel Locking Diamond Attachments (4) P-1 Preload Pads (2) KDH48E Kit Size Handles in Kit or (2) H48E 48" Handles in Set	241	109	
40	RS-40-ERSD		196	89	
50	KRS-50-ERSD	(4) 12.5-ERS Rollers (4) T-12.5-LD Swivel Locking Diamond Attachments (4) P-1 Preload Pads (2) KDH48E Kit Size Handles in Kit or (2) H48E 48" Handles in Set	249	113	
50	RS-50-ERSD		204	93	
—	Kit Not Available	(4) 25-ERS Rollers (4) T-25-LD Swivel Locking Diamond Attachments (4) P-2 Preload Pads (2) H48E 48" Handles in Set	—	—	
100	RS-100-ERSD		514	233	
—	Kit Not Available	(4) 65-ERS Rollers (4) T-65-LD Swivel Locking Diamond Attachments (4) P-2 Preload Pads (2) H60E 60" Handles in Set	—	—	
260	RS-260-ERSD		870	395	
—	Kit Not Available	(4) 100-ERS Rollers (4) T-100-LD Swivel Locking Diamond Attachments (4) P-2 Preload Pads (2) H60E 60" Handles in Set	—	—	
400	RS-400-ERSD		906	411	

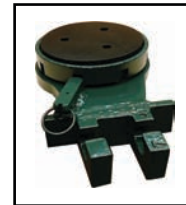
KRS-50-ERSD



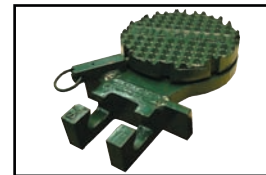
ERS



T-3.75-LP



T-3.75-LD



Specifications for Individual Rollers										
Capacity (Tons)	Model	Height		Width		Length		Weight		Contact Rolls
		in	mm	in	mm	in	mm	lbs	kg	
3.75	3.75-ERS	2-3/4	70	4-7/16	113	8-5/8	219	15	7	5
5	5-ERS	2-3/4	70	5-5/16	135	8-5/8	219	18	8	5
10	10-ERS	3-3/8	86	5-3/16	132	10-3/8	264	28	13	5
12.5	12.5-ERS	3-3/8	86	5-5/8	143	10-3/8	264	30	14	5
25	25-ERS	4-3/4	121	7-1/4	184	15-3/4	400	79	36	5
65	65-ERS	5-5/8	143	7-3/8	187	23	584	152	69	7
100	100-ERS	5-5/8	143	7-7/8	200	23	584	166	75	7

Green shading reflects rental inventory.

Specifications for Swivel Attachments													
Product numbers		Fits Individual Roller Product Number	Padded Style Height*		Diamond Style Height*		Attachment Width		Length*		Weight		
Swivel Locking Diamond Grip Top	Swivel Locking Padded Top		in	mm	in	mm	in	mm	in	mm	lbs	kg	
T-3.75-LD	T-3.75-LP	3.75-ERS	4-11/16	119	4-7/16	113	5-7/8	149	10-3/4	273	13	6	
T-5-LD	T-5-LP	5-ERS	4-11/16	119	4-7/16	113	5-7/8	149	10-3/4	273	13	6	
T-10-LD	T-10-LP	10-ERS	5-5/16	135	5-1/16	129	5-7/8	149	12-1/2	318	14	6	
T-12.5-LD	T-12.5-LP	12.5-ERS	5-5/16	135	5-1/16	129	5-7/8	149	12-1/2	318	14	6	
T-25-LD	T-25-LP	25-ERS	7-15/16	202	7-1/16	179	8	203	18-19/32	472	42	19	
T-65-LD	T-65-LP	65-ERS	8-13/16	224	7-15/16	202	8-3/8	213	25-3/8	645	47	21	
T-100-LD	T-100-LP	100-ERS	8-13/16	224	7-15/16	202	8-3/8	213	25-3/8	645	47	21	

Green shading reflects rental inventory.

Sales@lgh-usa.com | Pulling



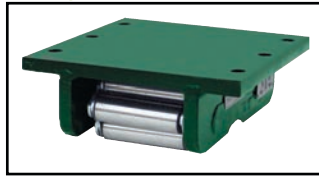
# Machine Skates

.75 - 75 Ton OT, NT, T Series

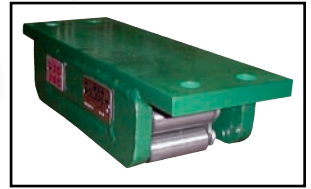
T-Style



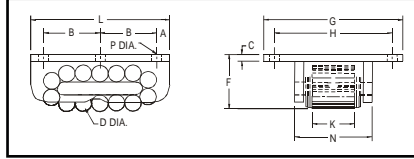
OT-Style



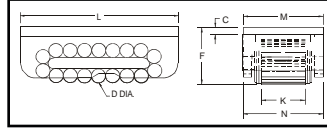
NT-Style



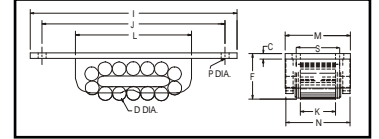
OT-Style



T-Style



NT-Style



## Specifications for OT, NT, T Series Rollers

Model				Dimensions (in - mm)																	Contact Rolls	Weight (lbs)		
OT Style	NT Style	T Style	Cap. (Tons)	A	B	C	D	F	G	H	I	J	K	L	M	N	P	R	S	OT		NT	T	
.75-OT	.75-NT	.75-T	.75	in	3/4	2-1/2	3/8	11/16	3-3/8	7	5-1/2	8	7-1/4	2	6-1/2	3-1/2	3-5/8	5/16	2	-	5	13	11	11
				mm	19	64	10	17	79	178	140	203	184	51	165	89	92	8	51	-		6	5	5
1-OT	1-NT	1-T	1	in	1/2	2-1/2	1/2	11/16	2-3/8	6	4-3/4	8	7	2	6	3-1/2	3-9/16	9/16	1-7/8	-	5	11	10	9
				mm	13	64	10	17	60	152	121	203	178	51	152	89	91	14	48	-		5	5	4
2.5-OT	2.5-NT	2.5-T	2.5	in	3/4	2-1/2	3/8	15/16	3-5/8	7	5-1/2	9-1/2	8	2-7/16	6-1/2	4	4-1/8	9/16	2	-	4	19	19	17
				mm	19	64	10	24	32	178	140	241	203	62	165	102	105	14	51	-		9	9	8
5-OT	5-NT	5-T	5	in	3/4	3-1/4	3/8	15/16	3-1/8	8	6-3/4	11-3/4	10-1/8	2-7/16	8	4-1/2	4-7/16	9/16	3	1/2	5	22	20	19
				mm	19	83	10	24	79	203	171	298	257	62	203	114	113	14	76	13		10	9	9
8-OT	8-NT	8-T	8	in	3/4	3-1/4	3/8	15/16	3-1/8	8	6-3/4	11-3/4	10-1/8	3-5/16	8	5	5-5/16	9/16	3	1/2	5	24	24	22
				mm	19	83	10	24	79	203	171	298	257	84	203	127	135	14	76	13		11	11	10
15-OT	15-NT	15-T	15	in	1-5/8	3-11/16	5/8	1-3/16	3-7/8	10	8-1/2	14-3/4	12-11/16	2-3/4	10-5/8	5	5-3/16	11/16	2-5/16	3/4	5	47	41	38
				mm	41	94	16	30	98	254	216	375	322	70	270	127	132	17	59	19		21	19	17
20-OT	20-NT	20-T	20	in	1-5/8	3-11/16	5/8	1-3/16	3-7/8	10	8-1/2	14-3/4	12-11/16	4	10-5/8	6-1/2	6-7/16	11/16	3-1/2	3/4	5	65	52	47
				mm	41	94	16	30	98	254	216	375	322	102	270	165	164	17	89	19		25	24	21
37.5-OT	37.5-NT	37.5-T	37.5	in	2	5-1/2	3/4	1-5/8	5-1/2	12	10-1/2	21	18-3/4	3-1/2	15	7	7-1/4	13/16	4-1/4	1	5	119	112	103
				mm	51	140	19	41	140	305	267	533	476	89	381	178	184	21	108	25		54	51	47
50-OT	50-NT	50-T	50	in	3-3/4	5-1/2	3/4	1-5/8	5-1/2	12	10-1/2	22-1/2	20-1/4	3-1/2	18-1/2	7	7-1/4	13/16	4-1/4	1	7	153	140	134
				mm	95	140	19	41	140	305	267	572	514	89	470	178	184	21	108	25		69	64	61
75-OT	75-NT	75-T	75	in	1-1/4	9-1/4	1	1-15/16	6-3/4	14	11-1/2	27	24	3-5/8	21	7-1/2	7-3/8	1-1/16	5	1	7	235	210	198
				mm	32	235	25	49	171	356	292	686	610	92	533	191	187	27	127	25		107	95	90

Green shading reflects rental inventory.

## Specifications

Model		Fits Roller Model	Dimensions						Weights					
Turntables			Rockers		R		U		T		Turntables		Rockers	
T-OT	T-NT		LRP	TRP	in	mm	in	mm	in	mm	lbs	kg	lbs	kg
T-5-OT	T-5-NT	5-LRP	5-TRP	5-OT/NT	1-1/2	38	6	152	4-3/8	111	15	7	36	17
T-8-OT	T-8-NT	8-LRP	8-TRP	5-OT/NT	1-1/2	38	6	152	4-3/8	111	16	8	43	20
T-15-OT	T-15-NT	15-LRP	15-TRP	15-OT/NT	1-1/2	38	6	152	5	127	23	11	101	46
T-20-OT	T-20-NT	20-LRP	20-TRP	20-OT/NT	1-1/2	38	6	152	5	127	23	11	120	55
T-37.5-OT	T-37.5-NT	37.5-LRP	37.5-TRP	37.5-OT/NT	2-3/8	60	8	203	6-1/2	15	54	25	196	89
T-50-OT	T-50-NT	50-LRP	50-TRP	50-OT/NT	2-3/8	60	8	203	7	178	54	25	196	89
T-75-OT	T-75-NT	75-LRP	75-TRP	75-OT/NT	2-3/8	60	8	203	9-1/4	235	85	39	390	173

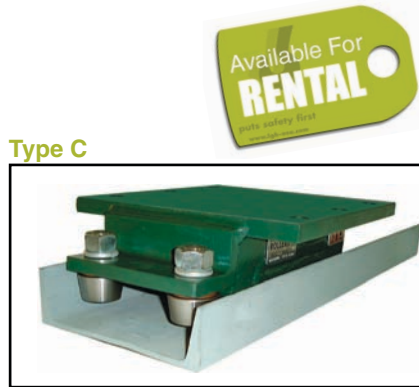
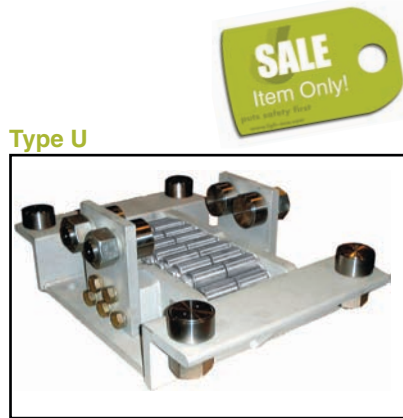
Green shading reflects rental inventory.



# Machine Skates

100 - 1,000 Ton SHD Series

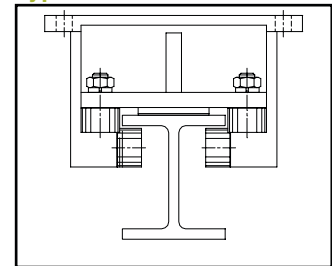
**NOTE:** Additional sizes available for rent. Consult LGH for availability



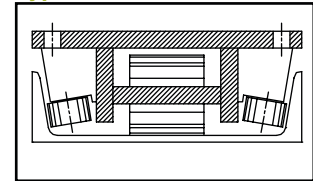
Specifications											
SHD Series Individual Rollers											
Capacity (Tons)	Model	Height		Top Plate Width		Top Plate Length		Weight		Contact Rolls	Use with (mount)
		in	mm	in	mm	in	mm	lbs	kg		
100	100-XT	6-3/4	171	8	203	21	533	217	98	7	-
150	150-XTL	6-3/4	171	8	203	32	813	329	149	11	-
150	150-XTW	6-3/4	171	9-7/8	251	21	533	307	139	14	-
200	200-XTW	6-3/4	171	12	305	21	533	313	142	14	-
200	200-XTWC	6-3/4	171	14-1/2	368	21	533	387	176	14	-
300	300-XT	10	254	10-3/4	273	34	864	706	320	8	-
500	500-XT	10	254	20	508	34	864	1,290	585	16	-
750	750-XT	Consult factory for specifications and weights									
1000	1000-XT	Consult factory for specifications and weights									
100	100-XNT	6-3/4	171	8	203	27	686	242	110	7	-
150	150-XNLT	6-3/4	171	8	203	38	965	365	166	11	-
150	150-XNTW	6-3/4	171	9-7/8	251	27	686	280	127	14	-
200	200-XNTL	6-3/4	171	8	203	42	1,067	396	180	14	-
200	200-XNTW	6-3/4	171	12	305	27	686	333	151	14	-
200	200-XNTWC	6-3/4	171	14-1/2	368	27	686	408	185	14	-
300	300-XNT	10	254	10-3/4	273	42	1,067	739	335	8	-
500	500-XNT	10	254	20	508	42	1,067	1,355	615	16	-
750	750-XNT	Consult factory for specifications and weights									
1000	1000-XNT	Consult factory for specifications and weights									
100	100-XOT	6-3/4	171	14	356	21	533	250	113	7	C
150	150-XOTL	6-3/4	171	14	356	32	813	399	181	11	-
150	150-XOTW	6-3/4	171	16	406	21	533	299	136	14	-
200	200-XOTL	6-3/4	171	14	356	36	914	463	210	14	-
200	200-XOTW	6-3/4	171	21	533	21	533	364	165	14	-
200	200-XOTWC	6-3/4	171	21	533	21	533	423	192	14	-
300	300-XOT	10	254	21	533	34	864	849	385	8	-
500	500-XOT	10	254	30	762	34	864	1,430	649	16	-
750	750-XOT	Consult factory for specifications and weights									
1,000	1000-XOT	Consult factory for specifications and weights									

Green shading reflects rental inventory.

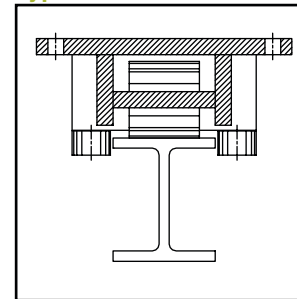
**Type U**



**Type C**



**Type R**



Sales@lgh-usa.com | Pulling

