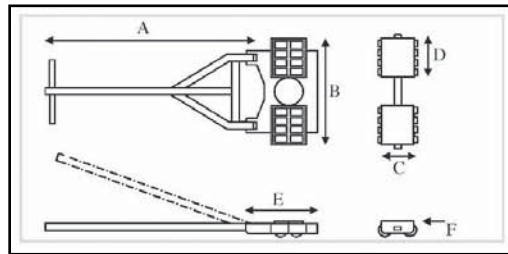


Load Equalizing Dollies

14 - 140 Ton E Series Specifications

NOTE: Additional sizes available for rent. Consult LGH for availability



E - 28



Dimensions (provided in inches)							
Model	A	B	C	D	E	F	Alignment Bar Length
E-14	44 1/2	17	7	5	16	4	45
E-28	50 1/2	25 1/2	7	9 1/2	16	4	51
E-42	62 1/2	36 1/2	8 1/2	14 1/2	17 1/2	4 3/4	64
E-84	63	45	11 3/4	15 3/4	21 3/4	6 1/2	64
E-140	63	52	16	19 1/2	26	8 1/2	64

Green shading reflects rental inventory.

Dimensions (provided in inches)							
Model	System Capacity (Tons)	Front Capacity (Tons)	Rear (ea) Capacity (Tons)	Front Weight (lbs)	Rear (ea) Weight (lbs)	Handle Weight (lbs)	Alignment Bar Weight (lbs)
E-14	14	7	3 1/2	52	13	12	6
E-28	28	14	7	81	23	13	7
E-42	42	21	10 1/2	135	50	23	11
E-84	84	42	21	330	95	31	20
E-140	140	70	35	545	185	50	30

Green shading reflects rental inventory.



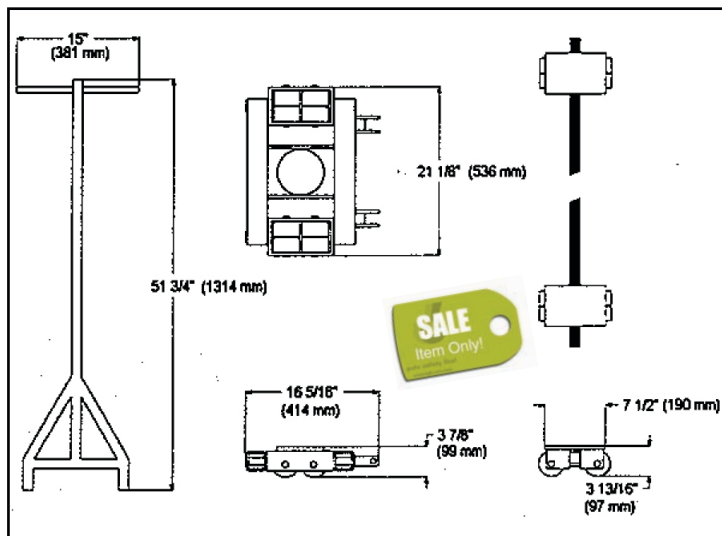
EASTERN
RIGGING SUPPLY CO., INC.

Lifting Gear Hire Corporation | 800.878.7305

www.lgh-usa.com | **Pulling**

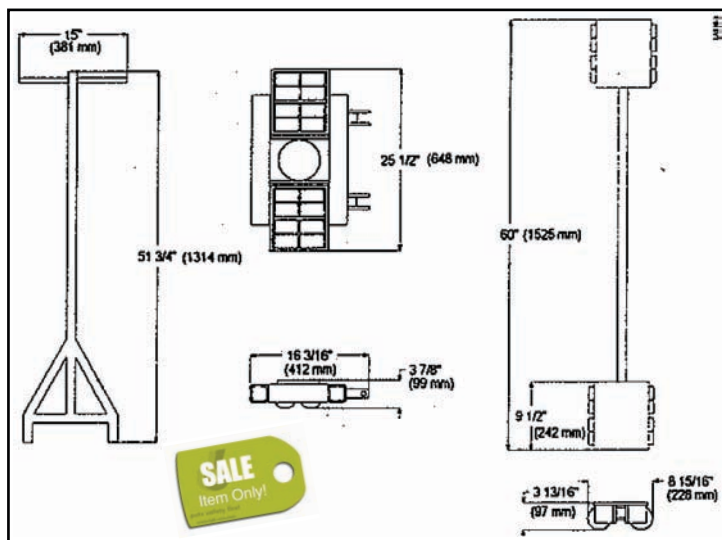
Load Equalizing Dollies

8, 16, 25 Ton LP Specifications



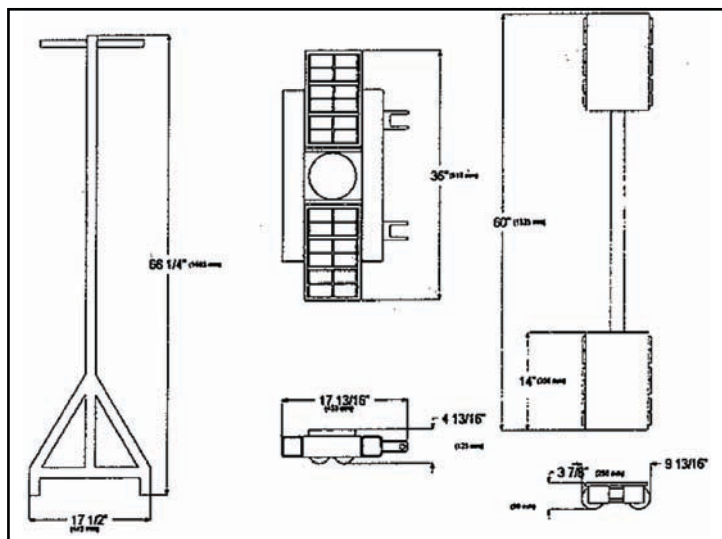
MODEL LP9, 9 (8) TON LOW PROFILE DOLLIES	
STEERABLE FRONT UNIT (Consists of one steer unit with handle)	
Maximum Load	9,000 lb.
Wheels	3 1/4" dia. x 1 7/8"
Turntable	6"
Overall Height	3 7/8"
Handle Length	51 3/4"
Heaviest Piece	37 lb.
Assembled Weight, Including Handle	84 lb.

ADJUSTABLE REAR SYSTEM (Consists of two rolling units)	
Maximum Load	9,000 lb.
Wheels	3 1/4" dia. x 1 7/8"
Local Area (20)	5" x 7"
Overall Height	3 13/16"
Width Adjustment	20" - 60"
Heaviest Item	26 lb.
Assembled Weight	62 lb.



MODEL LP18, 18 (16) TON LOW PROFILE DOLLIES STEERABLE FRONT UNIT (Consists of one steer unit with handle)	
Maximum Load	17,636 lb.
Wheels	3 1/4" dia. x 1 7/8"
Turntable	6"
Overall Height	3 7/8"
Handle Length	51 3/4"
Heaviest Piece	37 lb.
Assembled Weight, Including Handle	84 lb.

ADJUSTABLE REAR SYSTEM (Consists of two rolling units)	
Maximum Load	17,636 lb.
Wheels	3 1/4" dia. x 1 7/8"
Local Area (20)	9" x 7"
Overall Height	3 13/16"
Width Adjustment	20" - 60"
Heaviest Item	26 lb.
Assembled Weight	62 lb.



MODEL LP28, 28 (25) TON LOW PROFILE DOLLIES	
STEERABLE FRONT UNIT (Consists of one steer unit with handle)	
Maximum Load	27,557 lb.
Wheels	3 1/4" dia. x 1 7/8"
Turntable	7"
Overall Height	4 13/16"
Handle Length	66 1/4"
Heaviest Piece	53 lb.
Assembled Weight, Including Handle	132 lb.

ADJUSTABLE REAR SYSTEM (Consists of two rolling units)	
Maximum Load	27,557 lb.
Wheels	3 1/4" dia. x 1 7/8"
Local Area (20)	9" x 13"
Overall Height	3 7/8"
Width Adjustment	20" - 60"
Heaviest Item	40 lb.
Assembled Weight	93 lb.



LIFT SYSTEMS



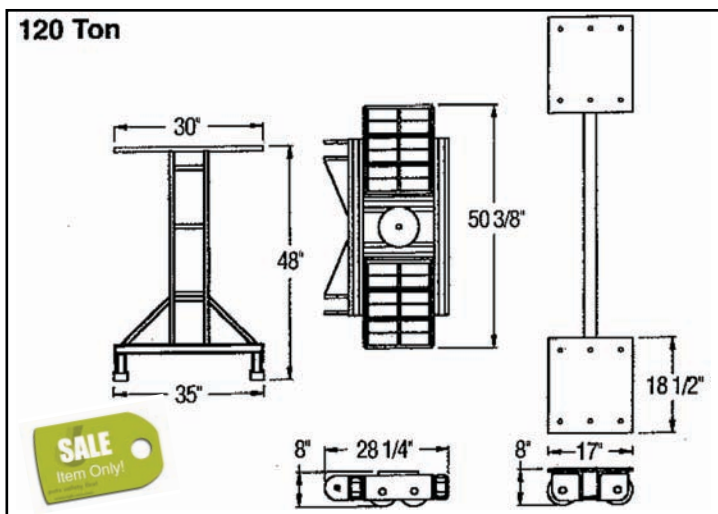
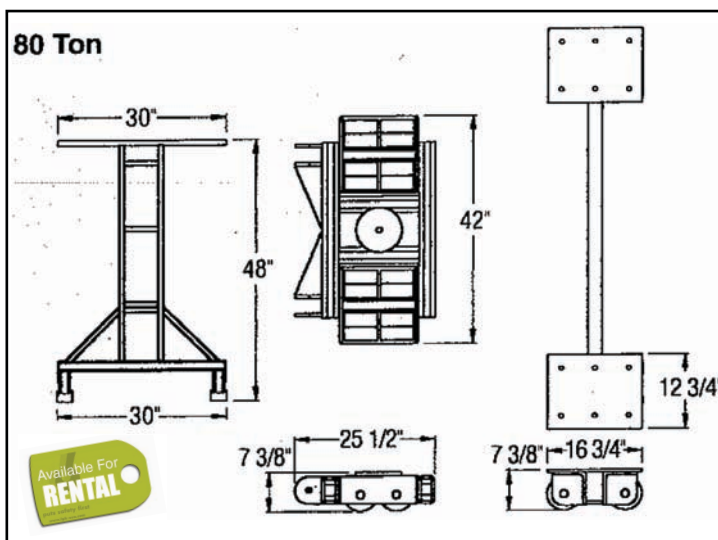
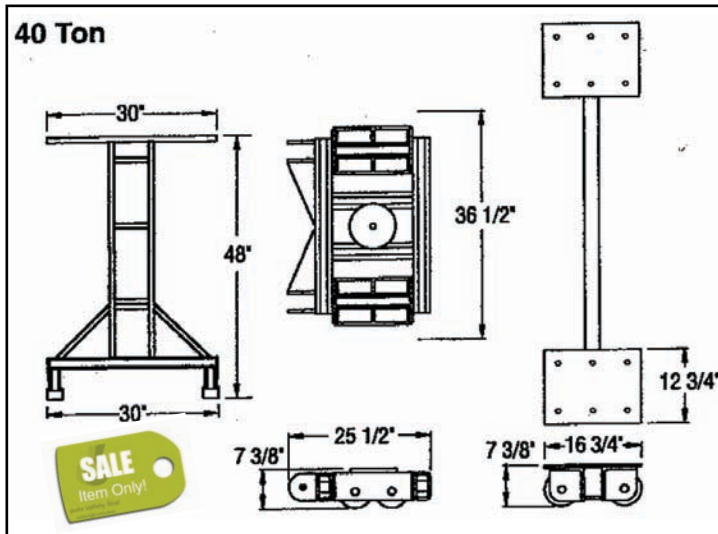
Green shading reflects rental inventory.



Sales@lgh-usa.com | Pulling

Load Equalizing Dollies

40, 80, 120 Ton LP Model Specifications



40 TON LOW PROFILE DOLLIES STEERABLE FRONT UNIT
(Consists of one steer unit with handle)

Maximum Load	40,000 lb.
Wheels (8 wheels)	6" dia. x 2 1/2"
Turntable	8 1/4"
Overall Height	7 3/8"
Handle Length	48"
Heaviest Piece	198 lb.
Assembled Weight, Including Handle	417 lb.

ADJUSTABLE REAR SYSTEM
(Consists of two rolling units)

Maximum Load 20,000 lb. per pad	40,000 lb.
Wheels (4 per pad)	6" dia. x 2 1/2"
Local Area (per pad)	12 3/4" x 16 3/4"
Overall Height	7 3/8"
Width Adjustment	Variable by axle length
Axle-5" x 2 1/2" rectangular tube	Customer supplied
Assembled Weight 158 lb. per pad	Total: 316 lb.

80 TON LOW PROFILE DOLLIES STEERABLE FRONT UNIT
(Consists of one steer unit with handle)

Maximum Load	80,000 lb.
Wheels (16 wheels)	6" dia. x 2 1/2"
Turntable	8 1/4"
Overall Height	7 3/8"
Handle Length	48"
Heaviest Piece	198 lb.
Assembled Weight, Including Handle	585 lb.

ADJUSTABLE REAR SYSTEM
(Consists of two rolling units)

Maximum Load 40,000 lb. per pad	80,000 lb.
Wheels (8 per pad)	6" dia. x 2 1/2"
Local Area (per pad)	12 3/4" x 16 3/4"
Overall Height	7 3/8"
Width Adjustment	Variable by axle length
Axle-5" x 2 1/2" rectangular tube	Customer supplied
Assembled Weight 198 lb. per pad	Total: 396 lb.

120 TON LOW PROFILE DOLLIES STEERABLE FRONT UNIT
(Consists of one steer unit with handle)

Maximum Load	120,000 lb.
Wheels (24 wheels)	6" dia. x 2 1/2"
Turntable	10"
Overall Height	8"
Handle Length	48"
Assembled Weight, Including Handle	905 lb.

ADJUSTABLE REAR SYSTEM
(Consists of two rolling units)

Maximum Load 60,000 lb. per pad	120,000 lb.
Wheels (12 per pad)	6" dia. x 2 1/2"
Local Area (per pad)	17" x 18 1/2"
Overall Height	8"
Width Adjustment	Variable by axle length
Axle-5" x 2 1/2" rectangular tube	Customer supplied
Assembled Weight 320 lb. per pad	Total: 640 lb.

Green shading reflects rental inventory.



LIFT SYSTEMS