

Double Drum Air Winch

TA2 16" Drums - 4,700 lbs.

TA2 Series Performance Characteristics	
Winch Model	TA2-16MX1
Load Rating - 1st Layer	7,200 lbs.
Load Rating - Mid Drum	5,700 lbs.
Load Rating - Full Drum	4,700 lbs.
Line Speed - 1st Layer	30 fpm.
Line Speed - Mid Drum	38 fpm.
Line Speed - Full Drum	46 fpm.
Dum Capacity - 1st Layer	83 ft.
Drump Capacity - Mid Drum	380 ft.
Drum Capacity - Full Drum	850 ft.
Input HP	7.1 hp.
Max. Stall Pull - 1st Layer	9,000 lbs.
Wire Rope Diameter	.5 in.
Pressure	90 psi.
Flow	250 scfm.
Pipe Inlet Size	1 in.
Hose Size	1.25 in.
Approximate Ship Weight	990 lbs.

Green shading reflects rental inventory.

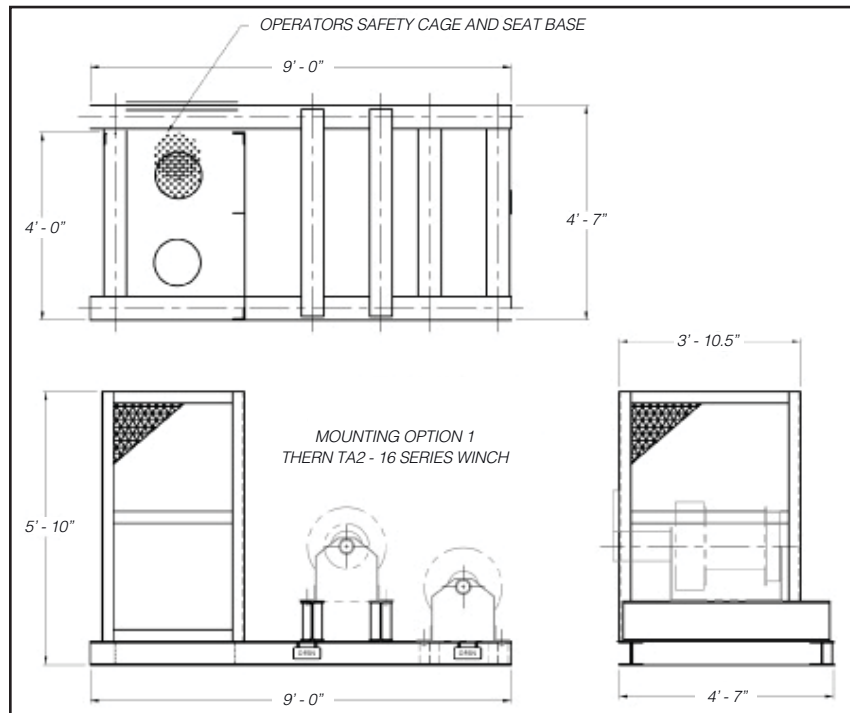
TA2 Series Winch



TA2 Series Dimensions	
Item	TA2-16MX1
A	44 in.
C	9.06 in.
J	28.50 in.
K	2.88 in.
L	7.50 in.
W	16.00 in.
Z1	233
Z2	34
Bolt Hole Size Grade	5/8 in. - G8

Specification Drawings to match the information in this table can be found on page 82 of this catalog.
Green shading reflects rental inventory.

TA2 Series Dimensions



Measurements in this diagram reflect the dimensions of the winch frame ONLY.
Refer to the dimension table for more information.



Double Drum Air Winch

TA5 24" Drums - 11,500 lbs.

TA5 Series Performance Characteristics

Winch Model	TA5-24
Load Rating - 1st Layer	18,000 lbs.
Load Rating - Mid Drum	14,000 lbs.
Load Rating - Full Drum	11,500 lbs.
Line Speed - 1st Layer	30 fpm.
Line Speed - Mid Drum	39 fpm.
Line Speed - Full Drum	47 fpm.
Drum Capacity - 1st Layer	120 ft.
Drum Capacity - Mid Drum	550 ft.
Drum Capacity - Full Drum	1,210 ft.
Input HP	17.8 hp.
Max. Stall Pull - 1st Layer	33,000 lbs.
Wire Rope Diameter	.75 in.
Pressure	90 psi.
Flow	550 scfm.
Pipe Inlet Size	1.5 in.
Hose Size	1.5 in.
Approximate Ship Weight	2,745 lbs.

Green shading reflects rental inventory.

TA5 Series Winch



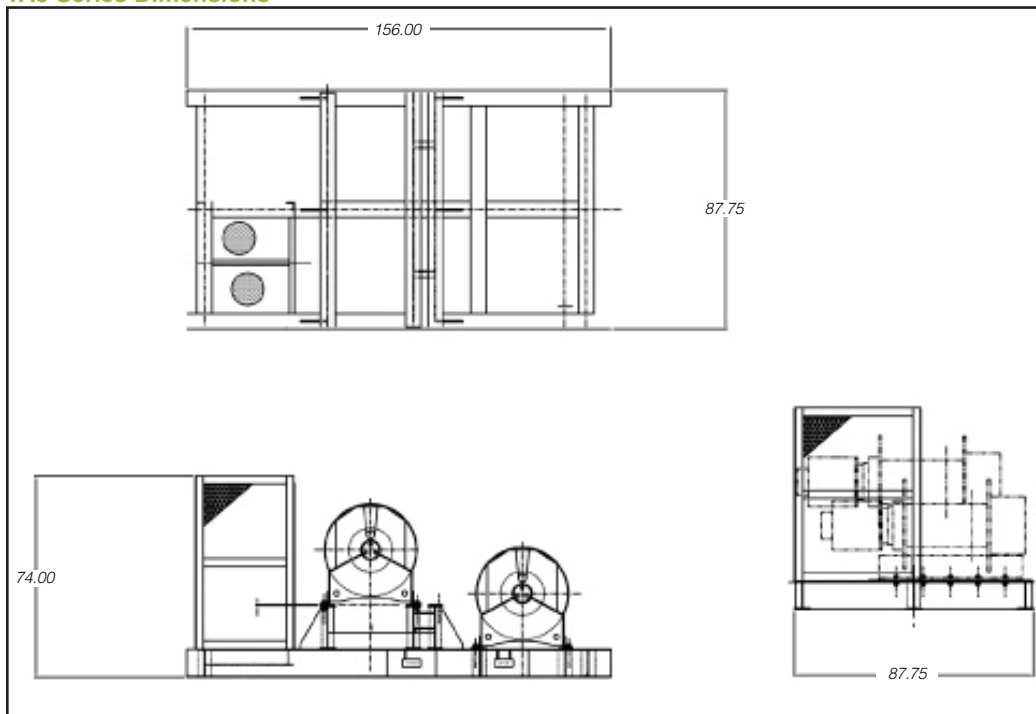
TA5 Series Dimensions

Item	TA5-24
A	65 in.
C	12.78 in.
J	43.50 in.
K	5.78 in.
L	10.50 in.
W	24.00 in.
Z1	224
Z2	50
Bolt Hole Size Grade	3/4 in - G8

Specification Drawings to match the information in this table can be found on page 84 of this catalog.
Green shading reflects rental inventory.



TA5 Series Dimensions



Measurements in this diagram reflect the dimensions of the winch frame ONLY. Refer to the dimension table for more information.



Double Drum Air Winch

TA7 30" Drums - 15,900 lbs.

TA7 Series Winch



TA7 Series Performance Characteristics	
1.6875 in	TA7-30MX1
Load Rating - 1st Layer	23,600 lbs.
Load Rating - Mid Drum	19,000 lbs.
Load Rating - Full Drum	15,900 lbs.
Line Speed - 1st Layer	19 fpm.
Line Speed - Mid Drum	24 fpm.
Line Speed - Full Drum	29 fpm.
Dum Capacity - 1st Layer	160 ft.
Drump Capacity - Mid Drum	650 ft.
Drum Capacity - Full Drum	1,440 ft.
Input HP	14.4 hp.
Max. Stall Pull - 1st Layer	38,000 lbs.
Wire Rope Diameter	.88 in.
Pressure	90 psi.
Flow	550 scfm.
Pipe Inlet Size	1.5 in.
Hose Size	1.5 in.
Approximate Ship Weight	3,765 lbs.

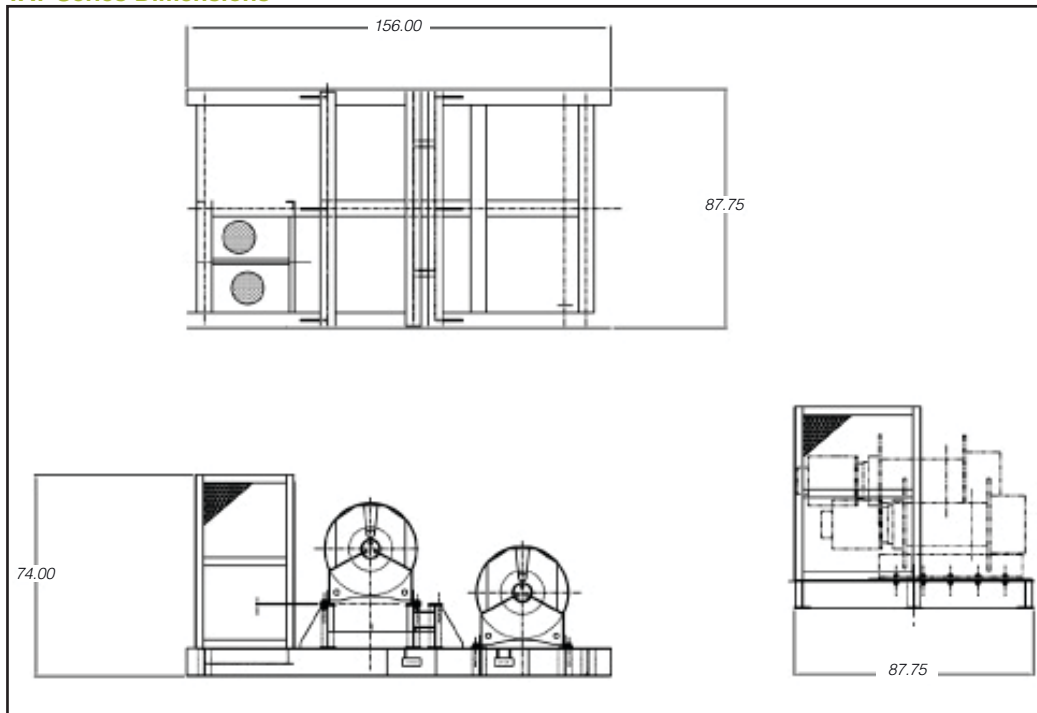
Green shading reflects rental inventory.

TA7 Series Dimensions	
Item	TA7-30MX1
A	75 in.
C	17.41 in.
J	53 in.
K	6.38 in.
L	10.00 in.
W	30.00 in.
Z1	210
Z2	39
Bolt Hole Size Grade	7/8 in. - G8

Specification Drawings to match the information in this table can be found on page 85 of this catalog.

Green shading reflects rental inventory.

TA7 Series Dimensions



Measurements in this diagram reflect the dimensions of the winch frame ONLY. Refer to the dimension table for more information.



Sales@lgh-usa.com | Pulling



Lifting Gear Hire Corporation | 800.878.7305

